



TOMASELLA

ATLANTE
LIVING SYSTEM

+ PROJECT PLUS

Atlante guida al design

Atlante project guide line

Atlante guía de diseño

Atlante guide du design

Atlante Designleitfaden



TOMASELLA

“Una collezione nasce per dare forma a un prodotto, ma soprattutto per interpretare gli stili di vita”

“Collections are designed to bring products to life but also to interpret different lifestyles.”

“Una colección nace para dar forma a un producto, pero sobre todo para interpretar los estilos de vida.”

“Une collection créée pour donner vie à un produit, mais surtout pour interpréter les styles de vie.”

“Eine Kollektion soll dem Produkt eine Form zu geben, aber in erster Linie unterschiedliche Lebensstile interpretieren.”

Atlante interpreta l'innovazione del design attraverso elementi e arredi dagli evidenti segni progettuali: tagli diagonali, inserti colorati o grafici, complementi originali, soluzioni a scomparsa, sistemi di retroilluminazione. Il suo carattere creativo si traduce in living sempre attuali, che si adattano a tutte le esigenze pratiche ed estetiche degli stili di vita moderni. Una collezione che lascia il segno.

—

Atlante interprets innovative design using elements and furniture with distinctive planning features: diagonal lines, coloured or graphic inserts, original occasional furniture, hide-away solutions and rear-lighting systems. Its creative character composes living room arrangements that are always the latest rage and capable of adapting to all the practical and aesthetic demands of modern lifestyles.

Undoubtedly a collection that leaves its mark.

Atlante interpreta la innovación del diseño a través de elementos y muebles que presentan evidentes signos distintivos en su proyecto: cortes diagonales o gráficos, complementos originales, soluciones ocultas y sistemas de retroiluminación. Su carácter creativo se traduce en salas siempre actuales que se adaptan a todas las necesidades prácticas y estéticas de los estilos de vida modernos. Una colección que deja huella.

Atlante interprète l'innovation du design à travers des éléments et des meubles dotés de signes conceptuels évidents : coupes diagonales, décoratifs colorés ou graphiques, compléments originaux, solutions invisibles, systèmes de rétroéclairage. Son caractère créatif se traduit par des livings toujours actuels qui s'adaptent à tous les besoins pratiques et esthétiques des styles de vie modernes. Une collection qui laisse des traces.

Atlante interpretiert die Innovation des Designs durch Elemente und Einrichtungsgegenständen mit hervorstechenden Entwurfsmerkmalen: schräge Zuschnitte, farbige oder grafische Einsätze, originelle Zusatzelemente, verdeckte Lösungen, Systeme zur Hintergrundbeleuchtung. Ihr kreativer Charakter führt zu immer aktuelleren Wohnräumen, die sich an alle praktischen und ästhetischen Bedürfnisse des modernen Lebens anpassen. Eine Kollektion, die ihre Spuren hinterlässt.

Remix

pensile / wall unit / colgante / élément haut / Wandschrank



Il taglio degli angoli permette l'unione dei pensili. Un segno progettuale distintivo per un design originale.

Angled corners let wall units fit together like a puzzle: a very distinctive mark afforded by original design.

El corte de las esquinas permite unir los colgantes. Un signo distintivo en un proyecto caracterizado por la originalidad de su diseño.

La coupe des angles permet d'unir les éléments hauts. Un signe conceptuel distinctif pour un design original.

Der Zuschnitt der Ecken erlaubt die Verbindung der Wandschränke. Ein unverwechselbares Entwurfsmerkmal für ein ausgefallenes Design.

Diagonal

pensile / wall unit / colgante / élément haut / Wandschrank



La linea diagonale suddivide in due parti il pensile sospeso: moduli chiusi ed elementi a giorno in metallo.

A diagonal line divides the wall unit into two parts consisting of a section with a door and another open-fronted one in metal.

La línea diagonal subdivide en dos partes el colgante suspendido: módulos cerrados y elementos abiertos de metal.

La ligne diagonale divise l'élément haut suspendu en deux parties : des modules fermés et des éléments ouverts en métal.

Die diagonale Linie teilt den Hängewandschrank in zwei Teile: geschlossene Module und offene Elemente aus Metall.

Totem Elle

totem con libreria terminale / totem unit with end bookcase / totem con librería terminal /
totem avec bibliothèque terminale / element totem mit abschluss-bücherregal



Colonna contenitore con fianco a giorno indicata per ambienti open space. Segno distintivo la linea della Panka integrata che continua anche in verticale.

A tall unit with open shelving on the side panel, perfect for open-space layouts. A distinctive feature is the top of the integrated Panka element that continues its run vertically across the tall unit.

Totem Elle totem con librería terminal. Columna contenedor con costado abierto indicada para open space. Signo distintivo, la línea de la Panka integrada continúa también en vertical.

Une colonne de rangement avec côté ouvert qui convient à des open space. Signo distintivo, la línea de la Panka integrada continúa también en vertical.

Hochschrank mit offener Seitenwand, besonders für Open Space-Entwürfe. Auffallend die Linie des integrierten Elements Panka, die sich auch senkrecht fortsetzt.

Totem e Panka

totem and panka / totem and panka / totem y panka /
totem et panka / totem und panka



L'elemento Panka è un pratico piano d'appoggio. Può essere integrato al totem contenitore.

Panka is a practical, multipurpose surface that can extend into the tall unit.

El elemento Panka es una práctica superficie de apoyo. Puede integrarse en la columna contenedor.

L'élément Panka est un pratique plan de dépose. Il peut s'intégrer dans la colonne de rangement.

Das Element Panka ist eine praktische Ablagefläche. Sie kann in den Hochschrank integriert werden.

Regolo

sistema maniglia / handle system / sistema tirador / système poignée / Griffsystem



La maniglia ha un interno personalizzabile con finitura tono su tono o a contrasto. Può essere applicata su basi e pensili.

The inside of this handle can be customised with a tone-on-tone or contrasting finish. It can be applied to base and wall units.



La línea diagonal subdivide en dos partes el colgante suspendido: módulos cerrados y elementos abiertos de metal.

La poignée a un bandeau que l'on pourra personnaliser avec des finitions ton sur ton ou contrastantes. Elle s'installe sur les éléments bas et les éléments hauts.

Der Griff hat einen individuell gestaltbaren Einsatz mit Ton in Ton-Ausführung oder in Kontrastfarbe. Der Griff lässt sich auf Unterteilen und Wandschränken einsetzen.



Fortebraccio

libreria / bookcase / librería / bibliothèque / Bücherregal



Stand-alone, integrata alle basi o a modulo singolo: la libreria bifacciale con struttura in metallo verniciato e mensole in diverse finiture arreda lo spazio.



Stand-alone, integrata con base units or used as a single module, the double-sided bookcase furnishes any space with its lacquered metal structure and shelves in various finishes.

Sola, integrada en los muebles bajos o en un módulo único: la librería bifacial con estructura de metal barnizado y estantes en distintos acabados decora el espacio.

En pose libre, intégrée dans les éléments bas ou comme module individuel: la bibliothèque double façade avec structure en métal laqué et étagères en différentes finitions meuble et décore l'espace.

Stand-alone, in Unterteile integriert oder als Einzelmodul: Das beidseitig ausgeführte Bücherregal mit Struktur aus lackiertem Metall und Fachböden in verschiedenen Ausführungen richtet jeden Raum ein.



Tetris

elementi in metallo / metal wall units / elementos de metal /
éléments en métal / elemente aus Metall



Il pensile retroilluminato in metallo è un elemento di raccordo tra i pensili. Ha la schiena personalizzabile.

This metal, rear-lit unit is used to connect wall units. It features a customisable back panel and an integrated.

El colgante retroiluminado de metal es un elemento de unión entre los colgantes. Su trasera, personalizable.

L'élément ouvert rétroéclairé en métal fait office de liaison entre les divers modules hauts. Il a un fond personnalisable.

Dieses Element aus Metall mit Hintergrundbeleuchtung dient als Verbindungselement zwischen den Wandschränken. Es besitzt eine individuell gestaltbare Rückwand.

Raster

elementi in metallo / metal wall units / elementos de metal /
éléments en métal / elemente aus Metall



L'elemento-libreria sospeso ha la struttura in metallo e la schiena, i divisori e i ripiani personalizzabili.

This element has been designed to connect wall units and has a metal structure and a customisable back panel.

En el elemento-librería con estructura de metal se pueden personalizar la trasera, los divisores y los estantes.

Le casier-bibliothèque suspendu a une structure en métal alors que la finition du fond, des séparations et des tablettes peut être personnalisée.

Das wandhängende Bücherregalelement hat eine Struktur aus Metall, die Rückwand, die Trennelemente und die Fachböden lassen sich nach Wunsch gestalten.

Elemento Z

elementi in metallo / metal wall units / elementos de metal /
éléments en métal / elemente aus Metall



Pensile a giorno con struttura in metallo.
La schiena è personalizzabile con grafiche,
finiture o colori.

This open wall unit with a metal structure has
an original «Z» shape. The back panel can be
customised with graphic designs or colours.

El colgante abierto con estructura de metal se
caracteriza por su singular forma de «zeta».
La trasera puede personalizarse con
decoraciones o colores.

Une forme particulière en Z pour cet élément haut
ouvert avec structure en métal. Le fond peut être
personnalisé avec des décors graphiques et des
teintes colorées.

Eine ungewöhnliche «Z-Form» für diesen
offenen Wandschrank mit Struktur aus Metall.
Die Rückwand kann mit Grafikmustern oder
Farben individuell gestaltet werd.



Divider

separatori in metallo / metal dividers / separadores de metal /
séparations en métal / Trennelemente aus Metall



**Gli elementi in metallo
colorato con fianco obliquo
si inseriscono all'interno dei
moduli a giorno come divisori.**

These coloured metal elements
with their slanting sides are
used to divide open-fronted
modules.

Los elementos de metal en
colores con costado oblicuo
se incorporan en los módulos
abiertos como divisores.

Les éléments en métal coloré
avec côté oblique s'installent à
l'intérieur des modules ouverts
pour créer des séparations.

Die Elemente aus farbigem
Metall mit schräger Seitenwand
werden als Trennelemente in die
offenen Module eingesetzt.

Ring

mensola / shelf / estante / étagère / bord



Mensola retroilluminata racchiusa da due originali anelli in metallo.

A rear-lit shelf to which two, original, metal square rings are applied.

Estante retroiluminado rodeado por dos originales anillos de metal.

Étagère rétroéclairée avec deux anneaux originaux en métal.

Bord mit Hintergrundbeleuchtung, das von zwei originellen Metallringen eingefasst wird.



Diagonal

boiserie / wall panelling / boiserie / habillage mural / Wandverkleidung



Il pannello con doppia finitura è disponibile con mensole integrate a uso libreria o come pannello porta tv con una sola mensola.

The dual-finish panel is available with integrated shelves – for use as a bookcase - or as a TV panel with a single shelf.

El panel con doble acabado está disponible con estantes integrados para convertirlo en una librería o con un solo estante para utilizarlo como panel porta TV.

Le panneau avec une double finition existe soit avec des étagères pour ranger des livres soit avec une seule étagère pour la fixation du téléviseur.

Das Paneel in doppelter Ausführung ist mit integrierten Borden für den Einsatz als Bücherregal oder als TV-Paneel mit nur einem Bord erhältlich.

Sir

elemento uso top / tray-cum-top / bandeja uso encimera /
plateau supérieur à rebords / Tablett als Abdeckplatte



Un pratico piano d'appoggio
"a vassoio" sul top della base.

A practical, tray-shaped top fitted on a base unit.

Una práctica superficie de apoyo «tipo bandeja»
sobre la encimera del mueble bajo.

Un pratique plan de dépose «à rebords»
s'installant sur le dessus de l'élément bas.

Eine praktische Ablagefläche «in Tablettform»
auf der Abdeckplatte des Unterteils.



Biblo

librerie / bookcases / librerías /
bibliothèques / Bücherregale



Un pannello-libreria in diverse finiture
da integrare alle basi del living.

A panel-bookcase in various finishes
designed to be integrated with living room
base units.

Un panel-librería en distintos acabados que
se integra en los muebles bajos de la sala de
estar.

Porte abattante conçue pour se transformer
en un plateau de bureau escamotable.

Ein Bücherregalpaneel in verschiedenen
Ausführungen, das sich in die Unterteile des
Wohnbereichs einsetzen lässt.

Scrivania integrata

home office



Anta con apertura a ribalta progettata per trasformarsi in scrivania a scomparsa.

Built-in desk.
A drop-down door designed to be used as a hide-away desk.

Escritorio integrado.
Puerta con apertura abatible diseñada para transformarse en un escritorio oculto.

Escritorio integrado.
Porte abattante conçue pour se transformer en un plateau de bureau escamotable.

Integriertes schreibpult.
Die speziell geplante Klapptür verwandelt sich bei Bedarf in ein bequemes Schreibpult.

Piano scrivania

home office



Lo scrivania con fianchi in vetro a terra o sovrapposti alla base si integra alla composizione.

Desktop.
The desk with its glass side panels standing on the floor or on a base unit fits discreetly into any arrangement.

Sobre de escritorio.
El escritorio con costados de cristal hasta el suelo o superpuestos al mueble bajo se integra en la composición.

Le bureau.
Avec côtés en verre posant soit au sol soit sur un élément bas, s'intègre dans la composition.

Schreibpultplatte.
as Schreibpult mit bodenstehenden Seitenteilen aus Glas oder als Aufsatz auf Unterteile ergänzt die Zusammenstellung.

Pivot

vano per tv / tv unit / compartimento para TV / panneau tv / Abteil



Il televisore a parete viene fissato sull'anta apribile. Una soluzione porta tv che è anche sistema di contenimento.

The wall-hung TV is attached to a pivot door: a TV panel that is also a storage unit.

El televisor de pared se fija en la puerta abrible. Una solución porta TV que también es un sistema de almacenamiento.

Le téléviseur prévu pour s'accrocher au mur est fixé à une porte ouvrante. Une solution pour la TV qui est également un système de rangement.

Das wandhängende Fernsehgerät wird an einer zu öffnenden Tür befestigt. Eine Lösung mit TV-Paneel, die auch als Stauraum dient.

Media box

sistema audio-video / audio-visual system / sistema audio-vídeo / système audio-vidéo / Audio-Video-System



Base con frontale in lamiera laccata microforata per trasmissione dei segnali infrarossi.

Base unit with front in lacquered micro-perforated sheet metal that lets infrared signals through.

Mueble bajo con frente de chapa lacada microperforada para la transmisión de las señales infrarrojas.

Élément bas avec façade micro-perforée laquée permettant la transmission des signaux infrarouges.

Unterteil mit Front aus lackiertem fein gelochtem Blech für die Übermittlung von Infrarot-Signalen.

Metropolis

anta telaio / framed door / puerta con marco / porte à cadre / Rahmentür



Anta telaio in finitura antracite con vetro trasparente o fumè per librerie e pensili. Lo spessore verticale diventa presa maniglia.

A door with an anthracite finish frame and transparent or smoked glass for bookcases and wall units. The vertical grip edges are used as handles.

Puerta con marco en acabado antracita con cristal transparente o fumé para librerías y colgantes. El espesor vertical se convierte en una ranura que reemplaza el tirador.

Porte à cadre finition anthracite avec verre transparent ou fumé pour bibliothèques ou éléments hauts. L'épaisseur du cadre vertical se transforme en une prise de main.

Rahmentür in Ausführung Anthrazit mit transparentem Glas oder Rauchglas für Bücherregale und Wandschränke. Die senkrechte Kante wird zum Griffprofil.



Anta scorrevole

sliding door / puerta corredera / porte coulissante / Schiebetür



Anta con movimento scorrevole per nascondere o mostrare la tv nelle composizioni spalla.

A sliding door that hides or exposes the TV for structural side shelving systems.

Puerta con movimiento corredero para ocultar o mostrar la TV en las composiciones con sistema costado.

Porte à ouverture coulissante pour masquer ou laisser apparaître la TV dans des compositions réalisées avec un système à montants.

Tür mit Gleitmechanismus, um das TV-Gerät in den Wangenverbauten zu verbergen oder herzuzeigen.

Krea light

sistema luce / lighting systems / sistema luz /
système d'éclairage / Lichtsystem



La boiserie-libreria con divisori in legno e metallo accoppiati è retroilluminata per dare luce alla composizione.

The wall panelling-shelving system paired with wood and metal dividers is rear-lit to brighten up the arrangement.

La boiserie-librería con divisores de madera y metal está provista de retroiluminación para aportar luz en la composición.

L'habillage mural-bibliothèque avec séparations en bois et en métal est rétroéclairé pour illuminer la composition.

Das Wandpaneel-Bücherregal mit passenden Trennelementen aus Holz und Metall besitzt eine Hintergrundbeleuchtung, um die Zusammenstellung ins rechte Licht zu tauchen.

Around light

sistema luce / lighting systems / sistema luz /
système d'éclairage / Lichtsystem



Sistema di retroilluminazione per pensili.

Rear lighting system for wall units.

Sistema de retroiluminación para colgantes.

Système de rétroéclairage pour éléments hauts.

Hintergrundbeleuchtungssystem für Wandschränke.

ATLANTE

LIVING SYSTEM

modern lines	4
live with elegance	34
natural lifestyle	56
loft design	92
sistema spalla	128
pagine tecniche	170
pagine di sintesi	177

Atlante è un sistema di living pensato e progettato per tutti gli stili di vita: moderno e geometrico, ricercato ed elegante, semplice e naturale oppure giovane e creativo. Scegli lo stile di arredo che si adatta meglio al tuo stile di vita.

Atlante is a living room furniture system designed to suit any lifestyle; it can be modern and geometric, refined and elegant, simple and natural or young and creative. Just choose the style of furniture that best suits your way of life.

stili di vita

modern lines

pag. 4



Atlante interpreta l'innovazione del design e la novità delle finiture mantenendo il calore e l'armonia di un'atmosfera senza tempo.

Il suo carattere contemporaneo si traduce in living sempre attuali, che si adattano a tutte le esigenze e non passano mai di moda.

To adapt the living room to a great number of metropolitan lifestyles, Atlanta uses its creativity to the full, combining and mixing furniture and finishes. The shapes of the arrangements are decidedly original and feature graphic designs for the doors as well as colourful elements.

live with elegance

pag. 34



Il living conquista e affascina a prima vista con la cura dei dettagli, la particolarità delle finiture, l'originalità degli accostamenti. Da quella più sobria e misurata, a quella più eclettica e ricercata, Atlante esprime la sua eleganza in molti modi.

At first sight, the living room wins you over and charms you because of its care to detail, distinctive finishes and original combinations. Atlante expresses its elegance in many ways, by means of understated and balanced arrangements as well as the most eclectic and refined layouts.

natural lifestyle

pag. 56



La naturalezza di Atlante dà forma a living d'ispirazione nordica, in cui le composizioni sono un perfetto connubio di estetica e funzionalità. I colori si attenuano, le superfici si fanno materiche, le venature si accentuano e tutto si armonizza.

Atlante's love of natural materials gives rise to Scandinavian-style furniture, creating arrangements in which aesthetics and functionality are paired to perfection. Colours are softer, surfaces more textured, wood grain becomes more visible and harmony reigns.

loft design

pag. 92



Atlante libera tutta la sua creatività accostando e mixando arredi e finiture, per adattare il living alla molteplicità degli stili di vita metropolitani. Le composizioni hanno forme originali, grafiche sulle ante e colori sugli elementi.

Original wall arrangements, graphic designs on the doors and colourful elements: there is no limit to Atlante's creativity. The living room breaks out of the mould, becoming free to mix and match furniture and finishes, proving itself capable of adapting to metropolitan lifestyles.

sistema spalla

pag. 128



Atlante permette di progettare pareti multifunzionali e multiformi integrando tra di loro spalle, ripiani, schienali e ante. Per chi vive il living come un "centro operativo", oltre che di incontro, ma non vuole rinunciare a colori, finiture e design originali.

Atlante lets you plan multi-functional and multi-shaped wall arrangements by combining side panels, shelves, back panels and doors. An ideal solution for all those who crave original colours, finishes and designs for their living room although it will also be a place of work as well as where they spend leisure time with their family and friends.

mood+design
modern lines

Cambiano gli stili di vita e le tendenze, ma il living rimane il centro vitale della casa, il luogo dove si riunisce la famiglia, si accolgono gli amici oppure semplicemente ci si rilassa. La contemporaneità di Atlante interpreta l'innovazione del design e la novità delle finiture mantenendo il calore e l'armonia di un'atmosfera senza tempo. Per ambienti di oggi che non passano mai.

Lifestyles and trends change but the living room remains the vital hub of the home: the place where the family gathers, friends spend time together and people just relax. Atlante's contemporary style interprets the innovation of design and new finishes while preserving the warmth and harmony of timeless atmospheres. For modern settings that never go out of fashion.



UNIT — A101
L/W 378 - P/D 24/40/47- H 189,5 cm

+ project plus —
REMIX / BIBLO / PANKA / TOTEM

Materico intreccio chiaro, materico
termocotto e materico cemento chiaro.

Light textured Intreccio, textured
heat-treated and light textured cement
finishes.





— Materico intreccio chiaro è un'elegante finitura che riveste la base e si abbina perfettamente all'effetto cemento dei pensili Remix.

— Light textured intreccio is an elegant finish that covers the surfaces of base units and perfectly matches the cement effect of Remix wall units.





UNIT — A102
L/W 288 P/D 38,5 H 187,5 cm

*project plus — FORTEBRACCIO

Materico cemento chiaro
e metallo antracite 160.

Light textured cement
and anthracite metal 160.

UNIT — A071
L/W 396 P/D 22/30/40/47 H 189,5 cm

*project plus —
KREA / TOTEM ELLE / PANKA

Laccato opaco madreperla 124, materico cemento scuro,
grafica 453 e metallo antracite 160.

Matt mother of pearl 124 lacquer, dark textured cement,
graphic 453 and anthracite metal 160.



UNIT — A072
L/W 342 P/D 22/40/51 H 182 cm

+ project plus — KREA

Materico opaco bianco gesso, materico
intreccio scuro e metallo bordeaux 156.

Textured matt chalk white, dark textured
intreccio and burgundy 156 metal.





— La boiserie Krea ama i contrasti materici e cromatici: l'esclusiva struttura dei divisori permette di abbinare il metallo dei lati esterni a un'altra finitura per la parte interna.

— Our Krea wall panelling loves contrasting textures and colours: the exclusive structure of the dividers lets you choose a metal finish on the outside and a different one on the inside.





UNIT — A103
L/W 306 P/D 24/40/51 H 180 cm

Materico opaco antracite, grafica 902, materico
cemento chiaro e laccato opaco carta da zucchero 155.

* project plus ----
BIBLO / METROPOLIS

Textured matt anthracite, graphic 902, light textured
cement and matt blue grey 155 lacquer.

UNIT — A069
L/W 306 P/D 30/40/51 H 202 cm

* project plus — ELEMENTO Z

Laccato opaco antracite 160, laccato opaco pomice 152, grafica 952, materico rovere termocotto e metallo antracite 160.

Matt anthracite 160 lacquer, matt pumice 152 lacquer, graphic 952, textured heat-treated oak and anthracite 160 metal.



UNIT — A123
L/W 342 P/D 30/40/51 H 180 cm

* project plus —
ELEMENTO Z / METROPOLIS

Materico cemento chiaro, grafica 911, metallo
antracite 160 e materico rovere termocotto.

Light textured cement, graphic 911, anthracite metal
160 and heat-treated oak.



— Il pensile con anta grafica applicata decora la parete e porta ulteriore originalità alla doppia profondità dei pensili.

— The unit with a graphic décor applied to it embellishes the wall and adds an additional touch of originality to the juxtaposed depth of the wall units.





— La base sospesa in rovere termocotto valorizza lo spazio con l'essenzialità della geometria.

—The wall-hung, heat-treated oak base unit enhances this space thanks to the minimalist beauty of its geometric lines.

UNIT ---- A070
L/W 288x234 P/D 30/40/47/51 H 202 cm

*project plus ---- TETRIS / PANKA

Materico opaco bianco gesso, materico cemento scuro,
materico rovere termocotto e metallo antracite 160.

Textured matt chalk white, dark textured cement,
textured heat-treated oak and anthracite 160 metal.



— Tetris è un originale elemento di raccordo tra i pensili. La struttura in metallo retroilluminata dallo spessore molto sottile e la schiena personalizzabile creano composizioni creative sulla parete.

— Tetris is an original way to connect wall units. The very slim, rear-lit, metal structure and the customisable back panel let you put together very creative wall compositions.



inspiration

Lo stile di vita e di arredo moderno ama i toni neutri e le finiture materiche per gli arredi da abbinare a tappeti e rivestimenti nelle stesse tonalità con grafiche minimal. Non devono mancare i complementi, purché originali nella forma e nella sostanza.

Modern lifestyles and furniture prefer neutral shades and textured finishes to pair with rugs and coverings in the same tones with minimalist graphic designs. Accessories are a must, as long as they are original in shape and substance.

WALL COLORS

NCS S 7020_Y90R

NCS S 2002 -Y50R

NCS S 5502-Y

Madie Metropolis laccato opaco antracite 160. Matt anthracite 160 lacquered Metropolis sideboards. L/W 72 P/D 40 H 157 cm



Tavolino Brigitte metallo antracite 160 e piano Hpl 11. Anthracite 160 metal Brigitte coffee table with an HPL 11 top. L/W 45 H 52 cm

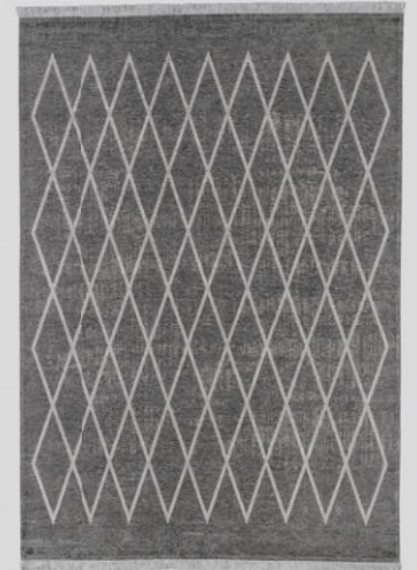


MOOD
STYLE

Poltroncina Maya cat. B ecopelle vintage 107, cat. 1/one easy 21. Maya chair B cat. vintage 107 eco-leather, cat. 1/one easy L/W 72 P/D 84 H 79 cm



Tappeto Frame. Frame rug. L/W 200 H 300 cm



Wallpaper wpt 511



Tavolo Avalon in legno laccato poro aperto antracite 260 e piano Hpl 11. Open-pore anthracite 260 lacquered wood Avalon table with an HPL 11 top. L/W 240 P/D 120 H 75 cm



ANTRACITE 160

CEMENTO CHIARO

MADREPERLA 124

CEMENTO CAVA

mood+design

live with elegance

Un piccolo dettaglio, un colore particolare, l'accostamento originale di più finiture: Atlante offre molti modi ed elementi per esprimere il concetto di eleganza. Dall'ambiente più sobrio e misurato, a quello più eclettico e ricercato, l'eleganza è sempre una questione personale, che diventa oggettiva se si sanno dosare gli elementi e trovare i giusti equilibri. Le proposte di Atlante possono dare al living quell'atmosfera che conquista e affascina a prima vista.

A small detail, an unusual colour, an original combination of various finishes: Atlante offers lots of ways and furniture to express the concept of elegance. From the most understated and unobtrusive to the most eclectic and refined settings, elegance is always a very personal matter but it can become objective if you know how to strike the right balance by the discerning use of furniture. Atlante's ideas can give the living room the type of atmosphere that wins you over and charms you at first sight





UNIT — A104
L/W 342 P/D 22/30/40 H 220 cm

* project plus ----
REGOLO / KREA LIGHT

Laccato opaco hot 127, materico rovere termocotto,
materico opaco antracite e metallo salvia 159.

Matt hot 127 lacquer, textured heat-treated oak,
textured matt anthracite and sage 159 metal.





— Tono su tono o a contrasto, la maniglia Regolo con interno personalizzato dà carattere e stile a basi e pensili.

— Tone-on-tone or in a contrasting shade, the Regolo handle with a customised insert adds character and style to base and wall units.



UNIT — A105
L/W 270 P/D 40 H 54 cm

+ project plus — SIR

Legno rovere termocotto
e laccato opaco salvia 159.

Heat-treated oak wood
and matt sage 159 lacquer.



Quel dettaglio che fa la differenza: l'elemento Sir valorizza il design della base sospesa e con il tavolo Plinto crea una zona pranzo molto ricercata.

A detail that makes all the difference: the Sir element enhances the design of the wall-hung base unit and paired with the Plinto table creates a very refined dining area.



UNIT — A062
L/W 378 P/D 22/30/51 H 174,5 cm

† project plus ---- KREA

Materico opaco madreperla, metallo
antracite 160 e materico rovere termocotto.

Textured matt mother of pearl, anthracite 160 metal
and textured heat-treated oak.





— Krea, di nome e di fatto: la boiserie-libreria è progettata per creare molteplici composizioni. I divisori, in legno e metallo accoppiati, sono la sua caratteristica distintiva.

— Krea stands for creative, by name and by nature: the wall panelling-bookcase has been designed to create lots of different arrangements. The dividers – in wood and metal on alternate sides – are its distinctive feature.



UNIT — A063
L/W 396 P/D 22/40/47 H 189,5 cm

+ project plus —
KREA / TOTEM ELLE / PANKA

Laccato opaco antracite 160, legno rovere
termocotto e materico intreccio scuro.

Matt anthracite 160 lacquer, heat-treated
oak wood and dark textured Intreccio.





La finitura intreccio scuro riproduce una particolare lavorazione intrecciata che riveste con eleganza gli arredi e la schiena della boiserie Krea.

The dark Intreccio finish reproduces an original, interwoven pattern that elegantly covers the furniture and Krea wall panels.



UNIT --- A065
L/W 378 P/D 30/40/47 H 201 cm

+ project plus ---
MEDIA BOX / METROPOLIS
DIAGONAL / PANKA

Laccato opaco antracite 160, laccato
opaco salvia 159, materico rovere
termocotto.

Matt anthracite 160 lacquer, matt
sage 159 lacquer, textured heat-
treated oak.



La doppia profondità dei pensili
e l'inserimento di elementi Raster
in metallo danno movimento
visivo alla parete.

Two wall unit depths and the
addition of metal Raster units add
visual movement to the wall.



UNIT — A106
L/W 468 P/D 30/40/51 H 204 cm

+ project plus — RASTER

Materico rovere termocotto, laccato opaco hot 127
e laccato opaco smoke 128.

Textured heat-treated oak, matt hot 127 lacquer
and matt smoke 128 lacquer.

inspiration

Lo stile elegante ama le finiture ricercate per vestire gli arredi, come effetti intrecciati e venature dalle tonalità calde. Tappeti e carte da parati decorano l'ambiente con sobrietà e i complementi si alleggeriscono grazie ai dettagli in vetro..

Elegant styles love refined finishes - like woven effects and warm-toned veins - on their furniture. Rugs and wallpaper decorate the home in an understated way while accessories look lighter thanks to glass details.

WALL COLORS

NCS S 7010_B30G

NCS S 1502-Y

NCS S 4005-Y80R

Poltrona Loft legno rovere termocotto cat B. ecopelle vintage 106.
Loft armchair in heat-treated oak wood / B cat. vintage 106 eco-leather.
L/W 65 P/D 75 H 70 cm



Tavolini Bloom legno rovere termocotto. Bloom coffee tables in heat-treated oak Ø 56 - H 47 cm



Tappeto Black&White. Black&White rug. L/W 200 H 300 cm

MOOD
STYLE



Tavolo Plinto legno rovere termocotto, vetro trasparente e metallo antracite 160.
Heat-treated oak wood Plinto table paired with transparent glass and anthracite 160 metal.
L/W 240 P/D 110 H 75 cm



Sedia York legno rovere termocotto/ cat. B ecopelle vintage 106.
York chair in heat-treated oak wood/ B cat. vintage 106 eco-leather.
L/W 47 P/D 61 H 92/48 cm



Wallpaper wpt 553



Madia Regolo materico opaco bianco gesso, inserto maniglia metallo bianco gesso 121 e materico nodato chiaro, basamento metallo antracite 160.
Regolo sideboard in textured matt chalk white with chalk white 121 metal and textured light knotted insert handle and anthracite 160 metal base.
L/W 216 P/D 40 H 97,5 cm



CARTA DA ZUCCHERO 155

INTRECCIO SCURO

ROVERE TERMOCOTTO

MADREPERLA 124

mood+design
natural lifestyle

La naturalezza di Atlante permette di dare forma a living luminosi d'ispirazione nordica, in cui le composizioni sono un perfetto connubio di estetica e funzionalità. I colori si attenuano, le superfici si fanno materiche, le venature si accentuano e tutto si armonizza in ambienti caldi e accoglienti. La zona giorno diventa così un nuovo focolare domestico progettato per l'intimità familiare.

Atlante's love of natural materials makes it possible to create bright Scandinavian-style living rooms in which aesthetics and functionality are paired to perfection. Colours are softer, surfaces are textured, wood grain becomes more visible and harmony reigns in warm and cosy settings. The day area becomes the new hub of the home designed to favour domestic intimacy.



UNIT — A107
L/W 342 P/D 30/40/51 H 220 cm

+ project plus —
RASTER / REGOLO

Materico cemento cava, materico opaco antracite,
materico frassino oriente e metallo antracite 160.

Textured cava cement, textured matt anthracite,
textured eastern ash and anthracite 160 metal.



— Disposti in verticale o in orizzontale, gli elementi Raster uniscono alla struttura in metallo la possibilità di personalizzare la schiena in diverse finiture.

— Arranged horizontally or vertically, the Raster units come with a metal structure that can be fitted with back panels customised in various finishes.



--- La boiserie Krea è un elemento dalle infinite potenzialità e può diventare una vera e propria libreria. Quando non è integrata ai pensili o ad altri arredi, sa prendersi tutto il suo spazio sulla parete e lo conquista, con uno stile molto personale.

--- Krea wall panelling has unlimited potential and can become a bookcase to all effects. When it isn't used with wall units or other furniture it can take up an entire wall and steal the limelight with its very personal style.



UNIT — A108
L/W 288 P/D 22 H 135 cm

+ project plus — KREA

Materico frassino oriente e metallo bianco gesso 121.

Textured eastern ash and chalk white 121 metal.

UNIT — A109
L/W 324 P/D 26/40/51 H 184 cm

+ project plus —
REGOLO / REMIX / RING

Materico nodato chiaro, materico opaco bianco
gesso e metallo bianco gesso 121.

Textured light knotted, textured matt chalk white
and chalk white 121 metal.

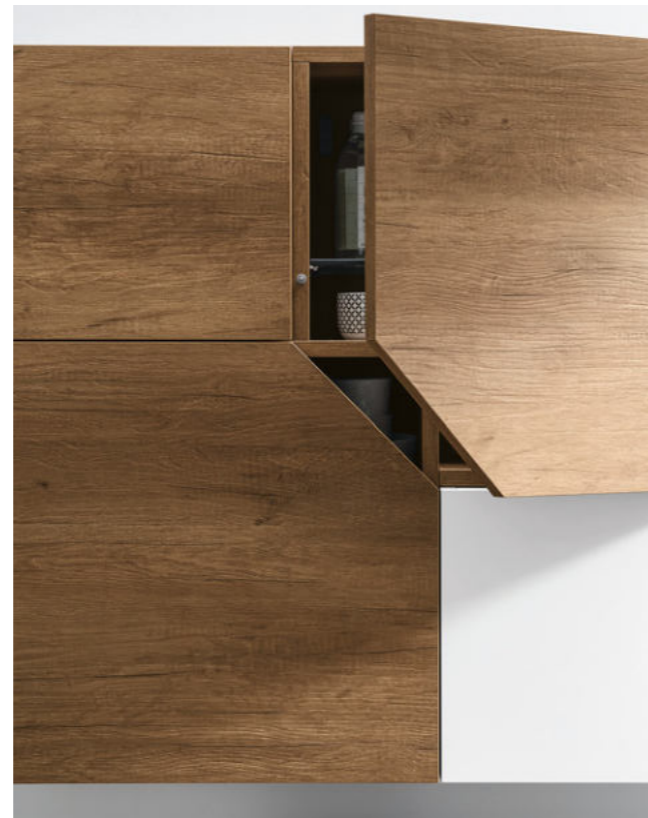




Il legno nodato e il materico nodato danno forma agli arredi e stile al living. Finiture che evocano l'essenza del legno appena tagliato e trasmette sensazioni tattili e visive.

Knotted and textured knotted wood define the shape of furniture and add style to the living room.

These finishes bring to mind the essence of freshly-sawn wood and convey pleasant tactile and visual sensations.



UNIT — A110
L/W 378 P/D 24/30/40/47 H 184 cm

+ project plus —
REMIX / BIBLO / MEDIA BOX / PANKA / AROUND

Laccato opaco carta da zucchero 155
e legno frassino oriente.

Matt blue grey 155 lacquer
and eastern ash wood.





- L'anta Media Box in metallo microforato lascia passare il segnale del telecomando verso i dispositivi inseriti all'interno del mobile.
- The micro-perforated metal Media Box door lets the remote control signal through so that it can reach the devices inside the cabinet.





— L'angolo tagliato è il tratto distintivo di Remix: l'anta unisce all'originalità del design, l'eleganza dei ripiani interni in vetro.

— The angled door is a distinctive feature of the Remix model: it combines the originality of its design with the elegance of glass interior shelves.



UNIT — A064
L/W 378 P/D 28/40/47 H 201,5 cm

+ project plus —
DIAGONAL / PANKA / MEDIA BOX

Laccato opaco carta da zucchero 155,
materico cemento chiaro e materico nodato chiaro.

Matt blue grey 155 lacquer, light textured
cement and textured light knotted finishes.





- Senza fianchi né schiene, la libreria Fortebraccio è visivamente aperta e leggera, ma molto solida dal punto di vista funzionale.
- The Fortebraccio bookcase is visually open and light and, although it has no side or back panels, is still extremely sturdy.



UNIT — A076
L/W 270/288 P/D 30/38,5/51 H 187,5 cm

Materico opaco bianco gesso, metallo bianco gesso 121
e materico nodato chiaro.

+ project plus — FORTEBRACCIO

Textured matt chalk white, chalk white 121 metal
and textured light knotted finishes.





UNIT — A077
L 378 P 22/40/47 H 189,5 cm

+ project plus —
KREA / TOTEM ELLE

Materico opaco bianco gesso, materico nodato chiaro, materico cemento chiaro e metallo bianco gesso 121.

Textured matt chalk white, textured light knotted, light textured cement and chalk white 121 metal finishes.



Il materico cemento chiaro riveste la boiserie Krea e il pensile, creando una continuità visiva. Il totem Elle con fianco a giorno apre il living verso altri ambienti e crea nell'arredo nuovi spazi contenitivi e decorativi.

Light textured cement coats the Krea wall panelling and the wall unit for a visually seamless effect. The Elle totem unit with an open-fronted side opens the living room up to other rooms in the home while creating new storage and decorative spaces.



UNIT — A078
L/W 278 P/D 22/30/51 H 247 cm

+ project plus — KREA

Materico opaco madreperla, materico nodato chiaro, grafica 413 e metallo antracite 160.

Matt mother of pearl, textured light knotted, graphic 413 and anthracite metal 160 finishes.





- Le diverse profondità degli elementi danno movimento alla parete e dinamismo alla composizione.
- Units of different depths add movement to the wall and dynamism to the arrangement.



UNIT — A017
L/W 288 P/D 30/40 H 216 cm

+ project plus — RASTER

Laccato opaco smoke 128, materico nodato scuro e metallo antracite 160.

Matt smoke 128 lacquer, textured dark knotted and anthracite 160 metal finishes.



inspiration

Lo stile naturale abbina le venature del legno al bianco e agli effetti materici per riprodurre nell'ambiente la varietà della natura. Tappeti e rivestimenti hanno tinte neutre e trame semplici per valorizzare ulteriormente la naturalezza degli arredi.

Our natural style pairs wood grains with white and textured effects to bring the many aspects of nature indoors. Rugs and finishes in neutral colours and simple patterns further enhance the natural style of the furniture.

WALL COLORS

NCS S 1000_N

NCS S 3502-Y

NCS S 7502-Y

Tavolino Joy Wood metallo antracite 160 e legno rovere.
Joy Wood coffee table in anthracite 160 metal and oak wood.
Ø 60 H 38 cm



Poltrona Flower cat. B econabuk 07, filo 3286.
Flower armchair B cat. eco-nubuck 07, yarn 3286.
L/W 85 P/D 75 H 75/40 cm

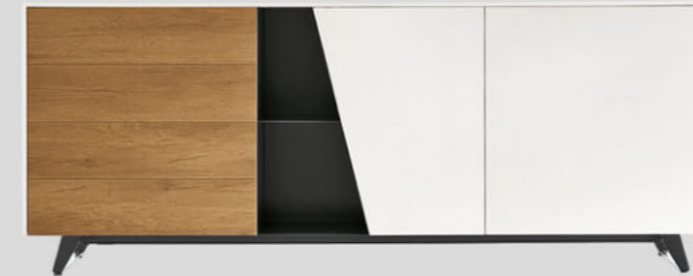


MOOD
STYLE

Tappeto Gradient.
Gradient rug.
L/W 200 H 300 cm



Madia Diagonal materico opaco bianco gesso, materico nodato chiaro e metallo antracite 160.
Diagonal sideboard in textured matt chalk white, textured light knotted and anthracite 160 metal finishes
L/W 219 P/D 51 H 85 cm



Wallpaper wpt 551



Mensole Ring materico nodato chiaro e metallo bianco gesso 121.
Textured light knotted and chalk white 121 metal Ring shelves.
L/W 180 P/D 26 H 27 cm



BIANCO GESSO 121

CEMENTO CHIARO

NODATO CHIARO

ANTRACITE 160

mood+design
loft design

Composizioni originali sulle pareti, grafismi sulle ante e colori sugli elementi: la creatività di Atlante non ha limiti. Il living esce dagli schemi, si concede la libertà di accostare e mixare arredi e finiture, dimostra di sapersi adattare agli stili di vita (e di arredamento) più attuali. I trend del momento si traducono in una grande varietà di proposte, progettate per esprimere al meglio tutte le personalità.

Original wall arrangements, graphic designs on the doors and colourful carcasses and frames: there is no limit to Atlante's creativity. The living room breaks out of the mould, becoming free to mix and match furniture and finishes and proving itself capable of adapting to more modern lifestyles and furnishings. Current trends translate into a great variety of proposals designed to perfectly express any personality.





UNIT — A111
L/W 378 P/D 22/30/40/47 H 184 cm

+ project plus —
KREA / PANKA / REGOLO

Materico opaco antracite, materico frassino
oriente, materico cemento cava, materico
cemento scuro e metallo antracite 160.

Textured matt anthracite, textured eastern ash,
textured Cava cement, dark textured cement
and anthracite 160 metal.



UNIT — A112
L/W 324 P/D 30/40/51 H 219,5 cm

+ PROJECT PLUS —
RASTER / METROPOLIS / SIR

Materico opaco antracite, materico
cemento chiaro, materico opaco madreperla
e metallo madreperla 124.

Textured matt anthracite, light textured cement,
textured matt mother of pearl and mother of pearl
124 metal finishes.



— L'elemento Sir torna sulla base del living come piano d'appoggio per il televisore. Pratico, oltre che decorativo.

— The Sir element makes its comeback on a living room base unit where it is used as a TV stand: a decidedly practical and decorative solution.



UNIT — A113
L/W 337 P/D 30/38,5/51 H 185 cm

* project plus —FORTEBRACCIO

Materico frassino oriente, materico cemento chiaro e metallo bianco gesso 121.

Textured eastern ash, light textured cement and chalk white 121 metal.



UNIT — A054
L/W 396 P/D 30/40/47/51 H 218 cm

Materico opaco bianco gesso, materico nodato chiaro ,
laccato opaco carta da zucchero 155, grafica 913
e metallo bianco gesso 121.

+ project plus —
ELEMENTO Z / PIANO SCRITTOIO

Textured matt chalk white, textured light knotted,
matt blue grey 155 lacquer, graphic 913
chalk white 121 metal finishes.





—Nell'anta grafica, il profilo è valorizzato da una finitura che crea sul bordo un particolare effetto bicolore. Frontale o di lato, la vista non delude mai.

—On the graphic door, the edge is set off by an aluminium finish that creates a special dual-coloured effect. Both from the front and side, the view is amazing .



UNIT — A073
L/ 288 P/D 24/30/40 H 180 cm

* project plus —
ELEMENTO Z / BIBLO

Materico cemento scuro, materico nodato chiaro,
metallo bordeaux 156 e grafica 913.

Dark textured cement, textured light knotted,
burgundy 156 metal and graphic 913 finishes.



UNIT — A082
L/W 378 P/D 22/30/40/47 H 189,5 cm

Laccato opaco pesca 157, materico cemento scuro,
materico nodato scuro e metallo antracite 160.

*project plus —
TOTEM ELLE / KREA

Matt peach 157 lacquer, dark textured cement,
textured dark knotted and anthracite 160 metal finishes.





Non sempre è il design di un arredo a creare le geometrie. Anche il colore e i contrasti di finiture disegnano forme, tracciano linee e mettono in evidenza i dettagli progettuali.

Geometric shapes are not always determined by the furniture design. Colours and contrasting finishes also draw shapes, mark lines and enhance design details.





UNIT — A002
L/W 378 P/D 30/40/47 H 189,5 cm

+ project plus —
DIAGONAL / TOTEM / PANKA

Laccato opaco grigio piacenza 130,
metallo antracite 160, materico maya
brunze e legno rovere nodato.

Matt Piacenza grey 130 lacquer,
anthracite 160 metal, textured
Maya bronze and knotted oak wood
finishes.



UNIT — A080
L/W 391 P/D 38,5/40/47 H 189,5 cm

+ project plus —
TOTEM ELLE / PANKA
FORTEBRACCIO

Laccato opaco carta da zucchero 155, laccato opaco
antracite 160, metallo zafferano 158 e laccato opaco
zafferano 158.

Matt blue grey 155 lacquer, matt anthracite 160
lacquer, saffron 158 metal and matt saffron 158
lacquer.





Giallo zafferano come colore di tendenza abbinato ai toni più scuri dell'antracite: con questi accostamenti la libreria Fortebraccio è decisamente giovane e al passo con i tempi.

Saffron yellow is a trendy colour and - paired here with darker anthracite tones - gives the Fortebraccio bookcase a decidedly young and modern appeal.



UNIT — A081
L/W 360 P/D 22/30/51 H 184 cm

Materico opaco madreperla, materico nodato scuro,
laccato opaco zafferano 158 e metallo smoke 128.

+ project plus — KREA

Textured matt mother of pearl, textured dark knotted,
matt saffron 158 lacquer and smoke 128 metal finishes.





—L'interno colorato dei divisori della boiserie-libreria Krea è un dettaglio di stile che dà originalità al living moderno.

—The coloured side of the Krea wall panelling-bookcase dividers is a stylish detail that gives the modern living room a touch of originality.





UNIT — A114
LW 360 P/D 22/24/40 H 165 cm

+ project plus — BIBLO

Laccato opaco bordeaux 156, materico opaco antracite, grafica 913 e materico nodato chiaro.

Matt burgundy 156 lacquer, textured matt anthracite, graphic 913 and textured light knotted finishes.

inspiration

Geometrie inedite e colori pieni: dall'arredo ai tessuti, lo stile si fa creativo e si esprime attraverso l'accostamento di forme e tonalità differenti. L'estetica va di pari passo con la funzionalità e, oltre ad essere belli, gli elementi sono pratici.

Original geometric shapes and deep colours: style becomes creative and expresses itself by combining different shapes and shades. Good looks go hand in hand with functionality, resulting in furniture that is both beautiful and practical.

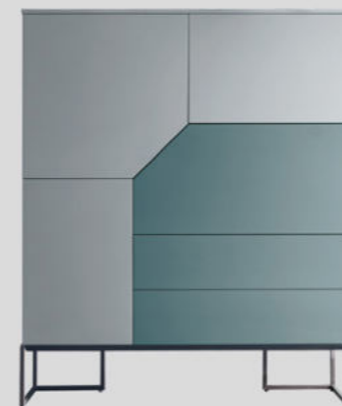
WALL COLORS

NCS S 3060 – Y10R

NCS S 1002-Y

NCS S 6005-G80Y

Madia Remix laccato opaco carta da zucchero 155, laccato opaco salvia 159 e metallo antracite 160.
Remix sideboard in matt blue grey 155 lacquer, matt sage 159 lacquer and anthracite 160 metal.
L/W 108 P/D 40 H 134 cm



Ciko metallo bordeaux 156, specchio 381.
Ciko in matt burgundy 156 lacquer, mirror 381.
L/W 36 P/W 24 H 36 cm



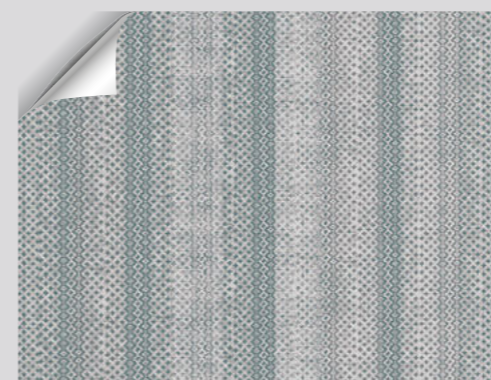
Scrivania Atlante materico rovere termocotto e metallo antracite 160.
Textured heat-treated oak and anthracite 160 metal Atlante desk.
L/W 120 P/D 70 H 87 cm

Tappeto Stripes.
Stripes rug.
L/W 200 H 300 cm



MOOD
STYLE

Wallpaper wpt 560



Tavolo Tudor rovere naturale scortecciato, metallo antracite 160 e metallo bordeaux 156.
Tudor table in natural stripped oak / anthracite 160 metal and burgundy 156 metal.
L/W 350 P/D 110 H 74 cm



BORDEAUX 156

SALVIA 159

BIANCO GESSO 121

ANTRACITE 160

sistema | system
spalla

Molto più di librerie, veri e propri sistemi di arredo per il living. Atlante permette di progettare pareti multifunzionali e multiformi integrando tra di loro spalle, ripiani, schienali e ante. Considerata come l'alternativa ai moduli componibili, i sistemi spalla sono una scelta diversa ma ugualmente versatile e con infinite possibilità di personalizzazione, negli elementi e nelle finiture. TV, libri e oggetti trovano in ogni soluzione tutto lo spazio e l'attenzione che meritano

Much more than bookcases, these are real, authentic furniture systems for the living room. Atlante makes possible to plan multi-functional and multishaped wall arrangements by combining side panels, shelves, back panels and doors. Designed as an alternative to modular elements, this system is a different yet equally versatile choice that offers endless opportunities to customise its parts and finishes. TVs, books and other objects get all the space and attention they deserve in any arrangement.





UNIT — A115
L/W 435 P/D28/30/51 H 219,5 cm

+ project plus — REGOLO

Materico frassino oriente, materico opaco bianco gesso e metallo bianco gesso 121.

Textured eastern ash, textured matt chalk white and chalk white 121 metal.



- Un solo modulo e Fortebraccio diventa una base originale, dai volumi aperti. Perfetta da abbinare alla base con libreria integrata.
- Use just one of its modules and Fortebraccio becomes an original, open base unit: a perfect match for the other base unit with an integrated bookcase.





UNIT — A116
L/W 345 P/D 40/51 H 219,5 cm

* project plus — REGOLO

Materico frassino oriente, materico opaco madreperla, laccato opaco carta da zucchero 155 e metallo antracite 160.

Textured eastern ash, textured matt mother of pearl, matt blue grey 155 lacquer and anthracite 160 metal.



— La libreria alterna moduli con o senza schiene, volumi aperti o chiusi da ante decorative: una grande varietà stilistica.

— The bookcase alternates modules with or without back panels as well as open volumes with others shut by decorative doors resulting in an impressive variety of styles.



L/W 651 P/D 40 H 273,5 cm

Materico frassino orientale,
materico cemento cava
e grafica 952.

Textured eastern ash,
textured Cava cement
and graphic 952 finishes.



UNIT — A036
L/W 363 P/D 31/51 H 219,5 cm

+ project plus —
SCRITTOIO INTEGRATO /
DIVIDER

Materico nodato chiaro, materico opaco bianco gesso,
laccato opaco hot 127 e metallo oliva 147.

Textured light knotted, textured matt chalk white and
matt hot 127 lacquer finishes and olive 147 metal finishes.





- L'anta con apertura a ribalta si trasforma in scrittoio e aggiunge alla libreria uno spazio home office.
- The drop-down door becomes a desk and adds some home office space to the bookcase.





UNIT — A086
L/W 417 P/D 28/38/51 H 255,5 cm

Materico nodato chiaro e materico
poro aperto bianco gesso.

Textured light knotted and textured
open-pore chalk white finishes.

UNIT — A117
L/W 399 P/D 38/41 H 183,5 cm

+ project plus ----
PIVOT / METROPOLIS

Materico rovere termocotto, materico intreccio chiaro
e metallo antracite 160.

Textured heat-treated oak, light textured Intreccio
and anthracite 160 metal finishes.





- Pivot porta tv apribile in materico intreccio chiaro.
- Pivot TV panel in light textured Intreccio.



UNIT — A124
L/W 420 P/D 30/40/51 H 183,5 cm

+ project plus ---- METROPOLIS

Laccato opaco salvia 159, materico
opaco madreperla e materico rovere termocotto.

Matt sage 159 lacquer, textured matt
mother of pearl and textured heat-treated oak.



- L'anta in vetro Metropolis con telaio in finitura antracite mette in risalto e in vetrina gli oggetti e i libri più preziosi.
- The Metropolis glass door with its anthracite frame enhances and showcases your most precious objects and books.

UNIT — A066
L / W 249 P / D 30 H 291,5 cm

+ project plus — METROPOLIS

Materico rovere termocotto
e materico opaco madreperla.

Textured heat-treated oak
and textured matt mother of pearl.



UNIT — A053
L/W 381 P/D 40 H 219,5 cm

+ project plus — METROPOLIS

Laccato opaco carta da zucchero 155.

Matt blue grey 155 lacquer.



UNIT — A118
L/W 453 P/D 28/30/51 H 219,5 cm

+ project plus — REGOLO

Materico cemento cava, materico opaco
antracite e laccato opaco carta da
zucchero 155.

Textured Cava cement, textured matt
anthracite and matt blue grey 155
lacquer finishes.





- Un tono leggermente più chiaro e la maniglia Regolo disegna una linea decorativa sulla base del living.
- The Regolo handle - in a slightly paler shade - draws a decorative line across the living room base unit.



UNIT — A119
L/W 147 P/D 41 H 147,5 cm

UNIT — A120
L/W 183 P/D 40 H 147,5 cm

* project plus — SCRITTOIO INTEGRATO

Materico opaco antracite e grafica 913.
Textured matt anthracite and graphic 913 finishes.





UNIT — A028
L/W 327 P/D 40/51 H 219,5 cm

+ project plus — DIAGONAL

Materico rovere termocotto,
laccato opaco hot 127 e materico
cemento scuro.

Textured heat-treated oak,
matt hot 127 lacquer and textured
dark cement finishes.



UNIT — A121
L/W 381 P/D 28/40 H 183 cm

* project plus —
DIVIDER

Materico opaco madreperla,
materico rovere termocotto
e metallo salvia 159.

Textured matt mother of pearl,
textured heat-treated oak
and sage 159 metal.



UNIT — A122
L/W 345 - P/D 40 - H 183,5 cm

+ project plus —
ANTA SCORREVOLE /
DIVIDER

Materico opaco antracite,
materico intreccio scuro
e metallo madreperla 124.

Textured matt anthracite,
dark textured Intreccio
and mother of pearl 124 metal.



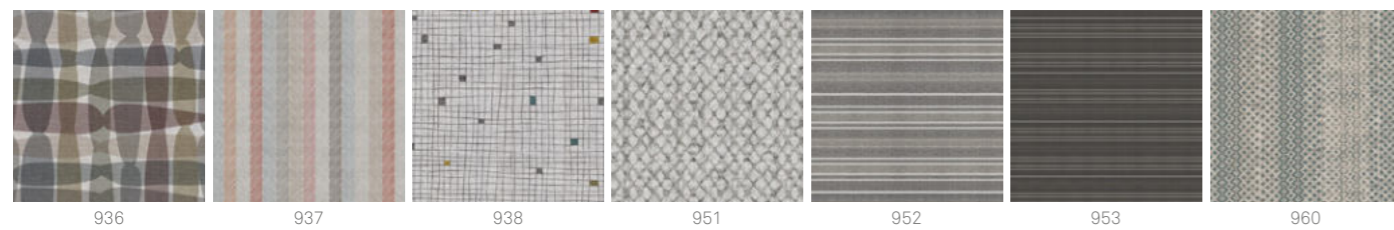
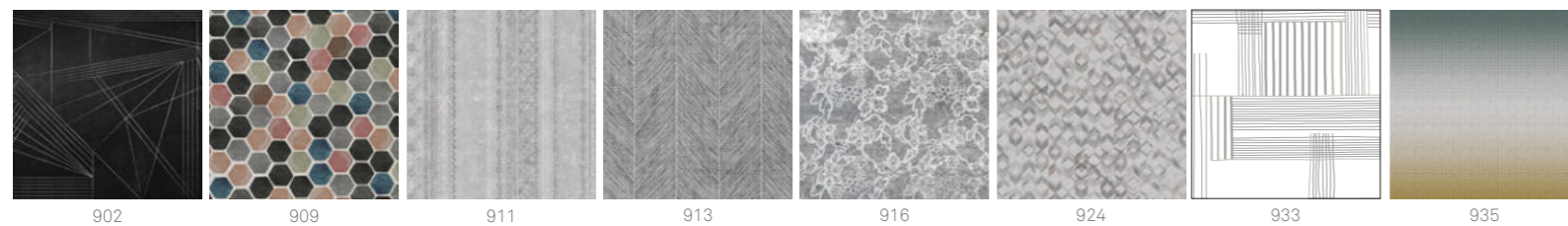
Atlante technical pages

Decora la tua stanza con colore, materiali e grafiche: crea il tuo mood personale.
Decorate your room with our colours,

Materials and graphic designs:
create your own, personal mood.

Ante, schienali e pensile z - Doors, kaos doors, back panels and z wall units

grafiche / graphic designs

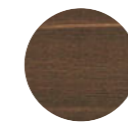


Boiserie Krea e Fortebraccio - Krea and Fortebraccio back panels

MATERICO ESSENZA / TEXTURED WOOD



MT-FO
Frassino Oriente
Eastern Ash



MT-RT
Rovere termocotto
Heat-treated Oak

MATERICO NODATO / TEXTURED KNOTTED

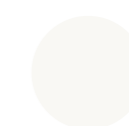


MT-RNC
Nodato chiaro
Light Knotted



MT-RNS
Nodato scuro
Dark knotted

MATERICO OPACO / MATT TEXTURED



MT-OC BG
Bianco Gesso
Chalk white



MT-OC MP
Madreperla
Mother of pearl



MT-OC AN
Antracite
Anthracite

MATERICO PORO APERTO / TEXTURED OPEN PORE



MT-PA BG
Bianco Gesso
Chalk white



MT-PA MP
Madreperla
Mother of pearl

MATERICO / TEXTURED



MT-CC
Cemento chiaro
Light cement



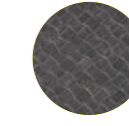
MT-CS
Cemento scuro
Dark cement



MT-CV
Cemento Cava
Cava cement



MT-MB
Maya Bronze



MT-INT S
Intreccio scuro



MT-INT C
Intreccio chiaro

LACCATI PORO APERTO / OPEN PORE LACQUERS



221 PA
Bianco Gesso
Chalk white



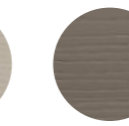
222 PA
Panna
Cream



224 PA
Madreperla
Mother of pearl



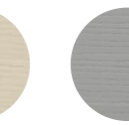
227 PA
Hot
Hot grey



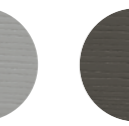
230 PA
Grigio Piacenza
Piacenza grey



250 PA
Canapa
Hemp

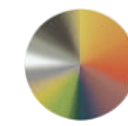


252 PA
Pomice
Pumice



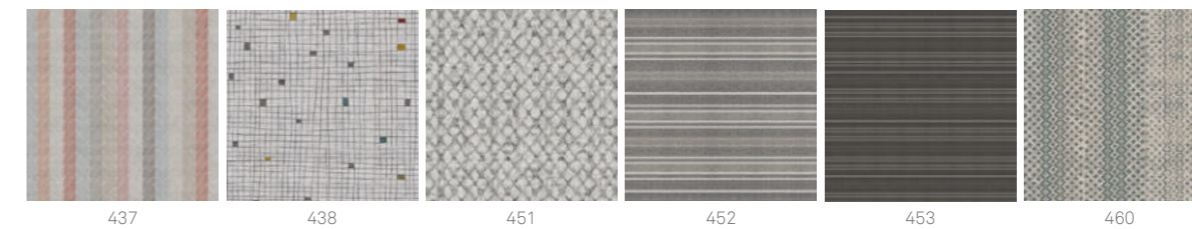
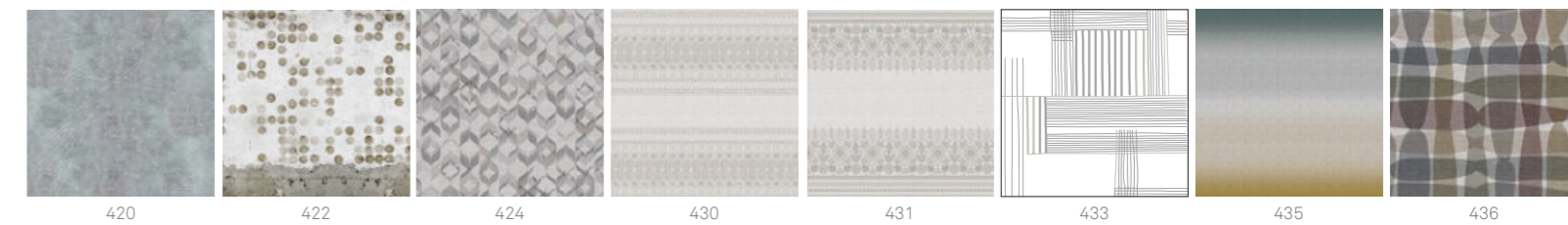
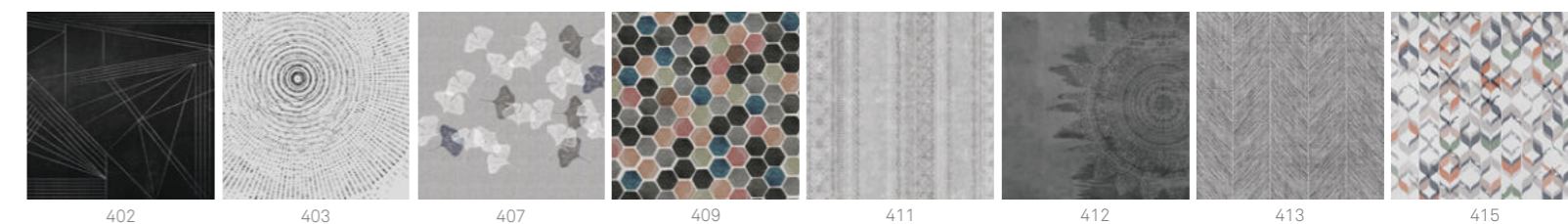
260 PA
Antracite
Anthracite

LACCATI / LAQUERED



**colori laccati opachi
a campionario
(vedi pagina 175)**
choice of matt lacquer
colours from our range
(see page 171)

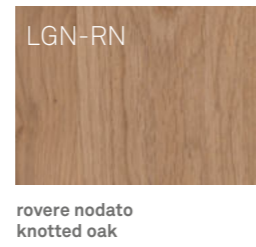
grafiche / graphic designs



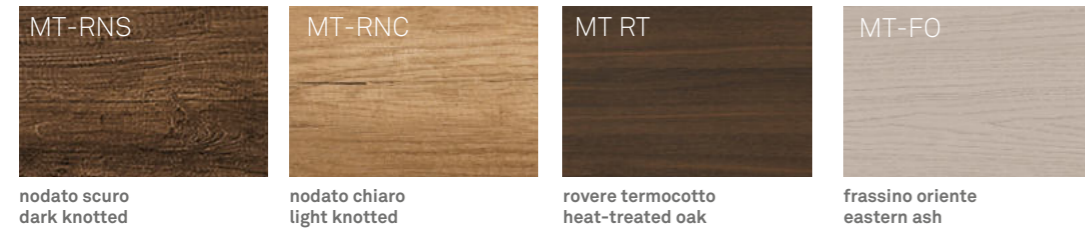
Essenze - Wood finishes



Solo per Panka - Only for Panka



Materico essenza - Textured Wood



Materico - Textured



solo dove previsto / only where expected



Materico opaco - Matt textured



Materico poro aperto - Open pore textured



Legno laccato poro aperto - Open pore lacquer wood



Laccati opachi e lucidi - Matt and gloss lacquers



Le finiture e i colori sono indicativi e possono subire variazioni dovute alla tecnica di stampa. Finishes and colours are given as a rough guide only and are reproduced as accurately as the print process allows.

Finiture telaio ante vetro - Glass door frame finishes



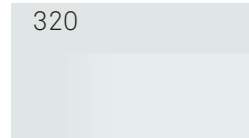
telaio titanio
titanium frame



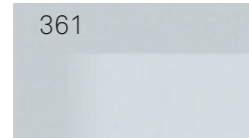
telaio colore*
coloured frame*

*In tutti i colori laccati della gamma Tomasella.
*In all the matt lacquer colours of the Tomasella range.

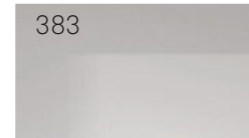
Vetri / specchi per anta telaio - glass / mirrors options for framed doors



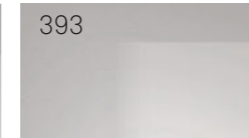
320
vetro trasparente
transparent glass



361
vetro satinato
satin glass



383
specchio grigio
grey mirror

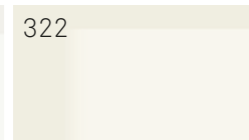


393
specchio grigio satinato
satin grey mirror

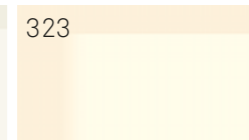
Vetri laccati lucidi per anta telaio - Gloss glass options for framed doors



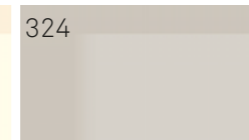
321
bianco gesso
chalk white



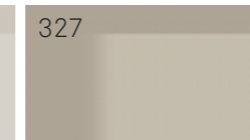
322
panna
cream



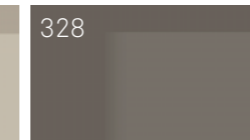
323
avorio
ivory



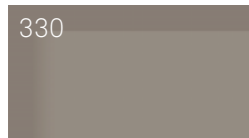
324
madreperla
mother of pearl



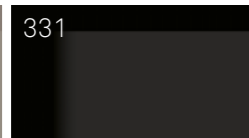
327
hot
hot grey



328
smoke
smoke



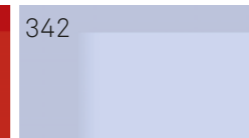
330
grigio piacenza
piacenza grey



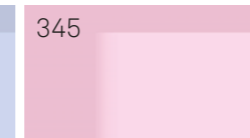
331
nero fumo
smoke black



334
rosso
red



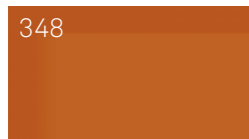
342
celeste
light blue



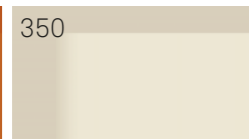
345
pink
pink



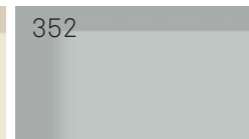
347
oliva
olive



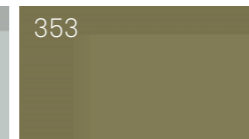
348
arancio
orange



350
canapa
hemp



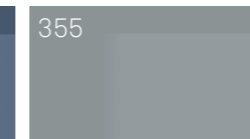
352
pomice
pumice



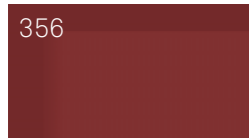
353
verde muschio
moss green



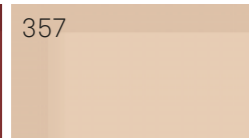
354
blu avio
air force blue



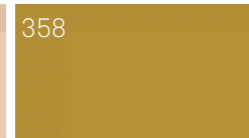
355
carta da zucchero
blue grey



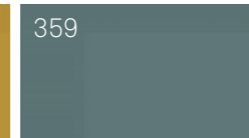
356
bordeaux
burgundy



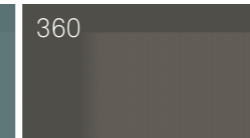
357
pesca
peach



358
zafferano
saffron



359
salvia
sage



360
antracite
anthracite

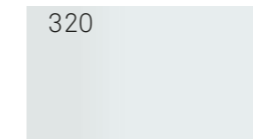
Finiture ante Metropolis - Metropolis door finishes



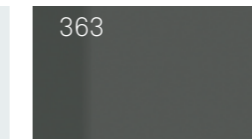
Elegante e lineare, l'anta Metropolis è disponibile con telaio in finitura antracite abbinata al vetro fumè o trasparente. Lo spessore verticale diventa presa maniglia per un'apertura pratica e bella. L'anta Metropolis è perfetta per composizioni spalla.

Elegant and linear, the Metropolis door is available with an anthracite finish frame paired with smoked or transparent glass. The vertical profile becomes a beautiful and practical grip edge. The Metropolis door pairs perfectly with open shelving units.

Vetri per anta Metropolis- Metropolis door glass options



320
vetro trasparente
transparent glass



363
vetro fumè
smoked glass

pagine di sintesi

testi in spagnolo,
francese e tedesco

Páginas de síntesis

Descriptifs

Seitenübersicht

Textos en español, francés y alemán
Textes en espagnol, français et allemand
Texte in spanisch, französisch und deutsch

Páginas de síntesis

Descrittifs

Seitenübersicht

Textos en español,
francés y alemán
Textes en espagnol,
français et allemand
Texte in spanisch,
französisch und deutsch

pag. 06-07



UNIT — A101
L/W 378 - P/D 24/40/47- H 189,5 cm

+ project plus — REMIX / BIBLO / PANKA / TOTEM

Texturizado trenzado claro, texturizado termotratado y texturizado cemento claro.

Texturé Intreccio clair, texturé chêne thermo-traité et texturé ciment clair.

Rau Geflecht hell, Rau Thermoeiche und Rau Zement hell.

pag. 10-11



UNIT — A102
L/W 288 P/D 38,5 - H 187,5 cm

+ project plus — FORTEBRACCIO

Texturizado cemento claro y metal antracita 160.

Texturé ciment clair et métal anthracite 160.

Rau Zement hell und Metall Anthrazit 160.

pag. 18-19



UNIT — A103
L/W 306 P/D 24/40/51 H 180 cm

+ project plus — BIBLO / METROPOLIS

Texturizado mate antracita, decoración 902, texturizado cemento claro y lacado mate azul niño 155.

Texturé anthracite mat, décor graphique 902, texturé ciment clair et laqué bleu pastel 155 mat.

Rau matt Anthrazit, Grafikmuster 902, Rau Zement hell und matt lackiert Pastellblau 155.

pag. 20-21



UNIT — A069
L/W 306 P/D 30/40/51 H 202 cm

+ project plus — ELEMENTO Z

Lacado mate antracita 160, lacado mate pómez 152, decoración 952, texturizado roble termotratado y metal antracita 160.

Laqué anthracite 160 mat, laqué ponce 152 mat, décor graphique 952, texturé chêne thermo-traité et métal anthracite 160.

Matt lackiert Anthrazit 160, matt lackiert Bimsstein 152, Grafikmuster 952, Rau Thermoeiche und Metall Anthrazit 160.

pag. 22-23



UNIT — A123
L/W 342 P/D 30/40/51 H 180 cm

+ project plus — ELEMENTO Z / METROPOLIS

Texturizado cemento claro, decoración 911, metal antracita 160 y texturizado roble termotratado.

Texturé ciment clair, décor graphique 911, métal anthracite 160 et texturé chêne thermo-traité.

Rau Zement hell, Grafikmuster 911, Metall Anthrazit 160 und Rau Thermoeiche.

pag. 12-13



UNIT — A071
L/W 396 P/D 22/30/40/47 H 189,5 cm

+ project plus — KREA / TOTEM ELLE / PANKA

Lacado mate madreperla 124, texturizado cemento oscuro, decoración 453 y metal antracita 160.

Laqué nacre 124 mat, texturé ciment foncé, décor graphique 453 et métal anthracite 160.

Matt lackiert Perlmutter 124, Rau Zement dunkel, Grafikmuster 453 und Metall Anthrazit 160.

pag. 14-15



UNIT — A072
L/W 342 P/D 22/40/51 H 182 cm

+ project plus — KREA

Texturizado mate blanco yeso, texturizado trenzado oscuro y metal burdeos 156.

Texturé blanc craie mat, texturé Intreccio foncé et métal bordeaux 156.

Rau matt Gipsweiß, Rau Geflecht dunkel und Metall Bordeaux 156.

pag. 28-29



UNIT — A070
L/W 288x234 P/D 30/40/47/51 H 202 cm

+ project plus — TETRIS / PANKA

Texturizado mate blanco yeso, texturizado cemento oscuro, texturizado roble termotratado y metal antracita 160.

Texturé blanc craie mat, texturé ciment foncé, texturé chêne thermo-traité et métal anthracite 160.

Rau matt Gipsweiß, Rau Zement dunkel, Rau Thermoeiche und Metall Anthrazit 160.

pag. 36-37



UNIT — A104
L/W 342 P/D 22/30/40 H 220 cm

+ project plus — REGOLO / KREA LIGHT

Lacado mate hot 127, texturizado roble termotratado, texturizado mate antracita y metal salvia 159.

Laqué hot 127 mat, texturé chêne thermo-traité, texturé anthracite mat et métal sauge 159.

Matt lackiert Hot 127, Rau Thermoeiche, Rau matt Anthrazit und Metall Salbei 159.

pag. 40-41



UNIT — A105
L/W 270 P/D 40 H 54 cm

+ project plus — SIR

Texturizado roble termotratado y lacado mate salvia 159.

Texturé chêne thermo-traité et laqué sauge 159 mat.

Rau Thermoeiche und matt lackiert Salbei 159.

Páginas de síntesis

Descriptifs

Seitenübersicht

Textos en español,
francés y alemán
Textes en espagnol,
français et allemand
Texte in spanisch,
französisch und deutsch

pag. 42-43



UNIT — A062
L/W 378 P/D 22/30/51 H 174,5 cm

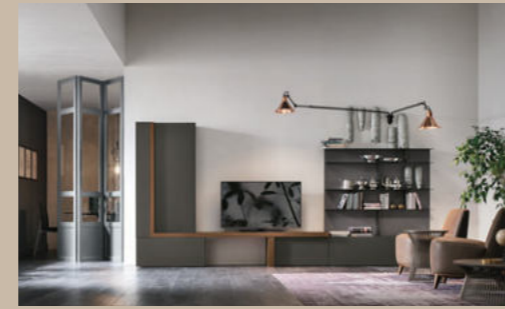
+ project plus — KREA

Texturizado mate madreperla, metal antracita 160 y texturizado roble termotratado.

Texturé nacre mat, métal anthracite 160 et texturé chêne thermo-traité.

Rau matt Perlmutt, Metall Anthrazit 160 und Rau Thermoeiche.

pag. 46-47



UNIT — A063
L/W 396 P/D 22/40/47 H 189,5 cm

+ project plus — KREA / TOTEM ELLE / PANKA

Lacado mate antracita 160, madera roble termotratado y texturizado trenzado oscuro.

Laqué anthracite 160 mat, bois de chêne thermo-traité et texturé Intreccio foncé.

Matt lackiert Anthrazit 160, Holz Thermoeiche und Rau Geflecht dunkel.

pag. 58-59



UNIT — A107
L/W 342 P/D 30/40/51 H 220 cm

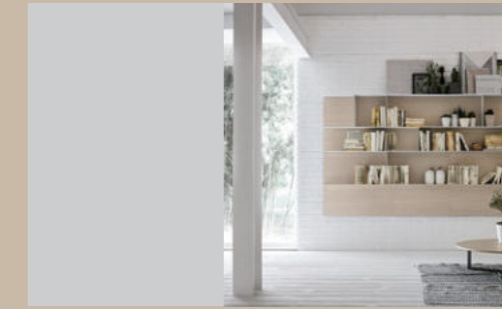
+ project plus — RASTER / REGOLO

Texturizado cemento cantera, texturizado mate antracita, texturizado fresno oriente y metal antracita 160.

Texturé ciment carrière, texturé anthracite mat, texturé frêne orient et métal anthracite 160.

Rau Zement Cava, Rau matt Anthrazit, Rau Esche Oriente und Metall Anthrazit 160.

pag. 63



UNIT — A108
L/W 288 P/D 22 H 135 cm

+ project plus — KREA

Texturizado fresno oriente y metal blanco yeso 121.

Texturé frêne orient et métal blanc craie 121.

Rau Esche Oriente und Metall Gipsweiß 121.

pag. 64-65



UNIT — A109
L/W 324 P/D 26/40/51 H 184 cm

+ project plus — REGOLO / REMIX / RING

Texturizado con nudos claro, texturizado mate blanco yeso y metal blanco yeso 121.

Texturé chêne à nœuds clair, texturé blanc craie mat et métal blanc craie 121.

Rau astig hell, Rau matt Gipsweiß und Metall Gipsweiß 121.

pag. 50-51



UNIT — A065
L/W 378 P/D 30/40/47 H 201 cm

+ project plus —
MEDIA BOX / METROPOLIS / DIAGONAL / PANKA

Lacado mate antracita 160, lacado mate salvia 159, texturizado roble termotratado.

Laqué anthracite 160 mat, laqué sauge 159 mat, texturé chêne thermo-traité.

Matt lackiert Anthrazit 160, matt lackiert Salbei 159, Rau Thermoeiche 160.

pag. 52-53



UNIT — A106
L/W 468 P/D 30/40/51 H 204 cm

+ project plus — RASTER

Texturizado roble termotratado, lacado mate hot 127 y lacado mate smoke 128.

Texturé chêne thermo-traité, laqué hot 127 mat et laqué smoke 128 mat.

Rau Thermoeiche, matt lackiert Hot 127 und matt lackiert Smoke 128.

pag. 68-69



UNIT — A110
L/W 378 P/D 24/30/40/47 H 184 cm

+ project plus —
REMIX / BIBLO / MEDIA BOX / PANKA / AROUND

Lacado mate azul niño 155 y madera fresno oriente.

Laqué bleu pastel 155 mat et bois de frêne orient.

Matt lackiert Pastellblau 155 und Holz Esche Oriente.

pag. 74-75



UNIT — A064
L/W 378 P/D 28/40/47 H 201,5 cm

+ project plus — DIAGONAL / PANKA / MEDIABOX

Lacado mate azul niño 155, texturizado cemento claro y texturizado con nudos claro.

Laqué bleu pastel 155 mat, texturé ciment clair et texturé chêne à nœuds clair.

Matt lackiert Pastellblau 155, Rau Zement hell und Rau astig hell.

pag. 78-79



UNIT — A076
L/W 270/288 P/D 30/38,5/51 H 187,5 cm

+ project plus — FORTEBRACCIO

Texturizado mate blanco yeso, metal blanco yeso 121 y texturizado con nudos claro.

Texturé blanc craie mat, métal blanc craie 121 et texturé chêne à nœuds clair.

Rau matt Gipsweiß, Metall Gipsweiß 121 und Rau astig hell.

Páginas de síntesis

Descriptifs

Seitenübersicht

Textos en español,
francés y alemán
Textes en espagnol,
français et allemand
Texte in spanisch,
französisch und deutsch

pag. 80-81



UNIT — A077
L 378 P/D 22/40/47 H 189,5 cm

+ project plus — PANKA / KREA / TOTEM ELLE

Texturizado mate blanco yeso, texturizado con nudos claro, texturizado cemento claro y metal blanco yeso 121.

Texturé blanc craie mat, texturé chène à nœuds clair, texturé ciment clair et métal blanc craie 121.

Rau matt Gipsweiß, Rau astig hell, Rau Zement hell und Metall Gipsweiß 121.

pag. 84-85



UNIT — A078
L/W 278 P/D 22/30/51 H 247 cm

+ project plus — KREA

Texturizado mate madreperla, texturizado con nudos claro, decoración 413 y metal antracita 160.

Texturé nacre mat, texturé chène à nœuds clair, décor graphique 413 et métal anthracite 160.

Matt lackiert Perlmutt, Rau astig hell, Grafikmuster 413 und Metall Anthrazit 160.

pag. 98-99



UNIT — A112
L/W 324 P/D 30/40/51 H 219,5 cm

+ project plus — RASTER / METROPOLIS / SIR

Texturizado mate antracita, texturizado cemento claro, texturizado mate madreperla y metal madreperla 124.

Texturé anthracite mat, texturé ciment clair, texturé nacre mat et métal nacre 124.

Rau matt Anthrazit, Rau Zement hell, Rau matt Perlmutt und Metall Perlmutt 124.

pag. 103



UNIT — A113
L/W 337 P/D 30/38,5/51 H 185 cm

+ project plus — FORTEBRACCIO

Texturizado fresno oriente, texturizado cemento claro, y metal blanco yeso 121.

Texturé frêne orient, texturé ciment clair, et métal blanc craie 121.

Rau Esche Oriente, Rau Zement hell und Metall Gipsweiß 121.

pag. 104-105



UNIT — A054
L/W 396 P/D 30/40/47/51 H 218 cm

+ project plus — ELEMENTO Z / PIANO SCRITTOIO

Texturizado mate blanco yeso, texturizado con nudos claro, lacado mate azul niño 155, decoración 913 y metal blanco yeso 121.

Texturé blanc craie mat, texturé chène à nœuds clair, laqué bleu pastel 155 mat, décor graphique 913 et métal blanc craie 121.

Rau matt Gipsweiß, Rau astig hell, matt lackiert Pastellblau 155, Grafikmuster 913 und Metall Gipsweiß 121.

pag. 89



UNIT — A017
L/W 288 P/D 30/40 H 216 cm

+ project plus — RASTER

Lacado mate smoke 128, texturizado con nudos oscuro y metal antracita 160.

Laqué smoke 128 mat, texturé chène à nœuds foncé et métal anthracite 160.

Matt lackiert Smoke 128, Rau astig dunkel und Metall Anthrazit 128.

pag. 96-97



UNIT — A111
L/W 378 P/D 22/30/40/47 H 184 cm

+ project plus — KREA / PANKA / REGOLO

Texturizado mate antracita, texturizado fresno oriente, texturizado cemento cantera, texturizado cemento oscuro y metal antracita 160.

Texturé anthracite mat, texturé frêne orient, texturé ciment carrière, texturé ciment foncé et métal anthracite 160.

Rau matt Anthrazit, Rau Esche Oriente, Rau Zement Cava, Rau Zement dunkel und Metall Anthrazit 160.

pag. 108-109



UNIT — A073
L/ 288 P/D 24/30/40 H 180 cm

+ project plus — ELEMENTO Z / BIBLO

Texturizado cemento oscuro, texturizado con nudos claro, metal burdeos 156 y decoración 913.

Texturé ciment foncé, texturé chène à nœuds clair, métal bordeaux 156 et décor graphique 913.

Rau Zement dunkel, Rau astig hell, Metall Bordeaux 156 und Grafikmuster 913.

pag. 110-111



UNIT — A082
L/W 378 P/D 22/30/40/47 H 189,5 cm

+ project plus — TOTEM ELLE / PANKA / KREA

Lacado mate melocotón 157, texturizado cemento oscuro, texturizado con nudos oscuro y metal antracita 160.

Laqué pêche 157 mat, texturé ciment foncé, texturé chène à nœuds foncé et métal anthracite 160.

Matt lackiert Pfirsich 157, Rau Zement dunkel, Rau astig dunkel und Metall Anthrazit 160.

pag. 114-115



UNIT — A002
L/W 378 P/D 30/40/47 H 189,5 cm

+ project plus — DIAGONAL / TOTEM / PANKA

Lacado mate gris piacenza 130, metal antracita 160, texturizado maya bronce y madera roble con nudos.

Laqué gris piacenza 130 mat, métal anthracite 160, texturé maya bronze et bois de chène à nœuds.

Matt lackiert Grau Piacenza 130, Metall Anthrazit 160, Rau Maya Bronze und Holz Eiche astig.

Páginas de síntesis

Descriptifs

Seitenübersicht

Textos en español,
francés y alemán

Textes en espagnol,
français et allemand

Texte in spanisch,
français und deutsch

pag. 116-117



UNIT — A080
L/W 391 P/D 38,5/40/47 H 189,5 cm

+ project plus —
TOTEM ELLE / FORTEBRACCIO / PANKA

Lacado mate azul niño 155, lacado mate antracita 160,
metal azafrán 158 y lacado mate azafrán 158.

Laqué bleu pastel 155 mat, laqué anthracite 160 mat,
métal safran 158 et laqué safran 158 mat.

Matt lackiert Pastellblau 155, matt lackiert Anthrazit 160,
Metall Safrangelb 158 und matt lackiert Safrangelb 158.

pag. 120-121



UNIT — A081
L/W 360 P/D 22/30/51 H 184 cm

+ project plus — KREA

Texturizado mate madreperla, texturizado con nudos
oscuro, lacado mate azafrán 158 y metal smoke 128.

Texturé nacre mat, texturé chène à nœuds foncé,
laqué safran 158 mat et métal smoke 128.

Rau matt Perlmutt, Rau astig dunkel, matt lackiert
Safrangelb 158 und Metall Smoke 128.

pag. 134-135



UNIT — A116
L/W 345 P/D 40/51 H 219,5 cm

+ project plus — REGOLO

Texturizado fresno oriente, texturizado mate madreperla,
lacado mate azul niño 155 y metal antracita 160.

Texturé frêne orient, texturé nacre mat, laqué bleu pastel
155 mat et métal anthracite 160.

Rau Esche Oriente, Rau matt Perlmutt, matt lackiert
Pastellblau 155 und Metall Anthrazit 160.

pag. 138-139



L/W 651 P/D 40 H 273,5 cm

Texturizado fresno oriente, texturizado cemento
cantera y decoración 952.

Texturé frêne orient, texturé ciment carrière
et décor graphique 952.

Rau Esche Oriente, Rau Zement Cava und
Grafikmuster 952.

pag. 140-141



UNIT — A036
L/W 363 P/D 31/51 H 219,5 cm

+ project plus —
SCRITTOIO INTEGRATO / DIVIDER

Texturizado con nudos claro, texturizado mate blanco
yeso, lacado mate hot 127 y metal oliva 147.

Texturé chène à nœuds clair, texturé blanc craie mat,
laqué hot 127 mat et métal olive 147.

Rau astig hell, Rau matt Gipsweiß,
matt lackiert Hot 127 und Metall Olivgrün 147.

pag. 124-125



UNIT — A114
L/W 360 P/D 22/24/40 H 165 cm

+ project plus — BIBLO

Lacado mate burdeos 156, texturizado mate antracita,
decoración 913 y texturizado con nudos claro.

Laqué bordeaux 156 mat, texturé anthracite mat, décor
graphique 913 et texturé chène à nœuds clair.

Matt lackiert Bordeaux 156, Rau matt Anthrazit,
Grafikmuster 913 und Rau astig hell.

pag. 130-131



UNIT — A115
L/W 435 P/D 28/30/51 H 219,5 cm

+ project plus — REGOLO

Texturizado fresno oriente, texturizado mate blanco
yeso y metal blanco yeso 121.

Texturé frêne orient, texturé blanc craie mat
et métal blanc craie 121.

Rau Esche Oriente, Rau matt Gipsweiß und Metall
Gipsweiß 121.

pag. 144-145



UNIT — A086
L/W 417 P/D 28/38/51 H 255,5 cm

Texturizado con nudos claro y texturizado poro
abierto blanco yeso.

Texturé chène à nœuds clair et texturé blanc craie
à pores ouverts.

Rau astig hell und Rau offenporig lackiert Gipsweiß.

pag. 146-147



UNIT — A117
L/W 399 P/D 38/41 H 183,5 cm

+ project plus — PIVOT / METROPOLIS

Texturizado roble termotratado, texturizado
trenzado claro y metal antracita 160.

Texturé chène thermo-traité, texturé Intreccio clair
et métal anthracite 160.

Rau Thermoeiche, Rau Geflecht hell
und Metall Anthrazit 160.

pag. 150-151



UNIT — A124
L/W 420 P/D 30/40/51 H 183,5 cm

+ project plus — METROPOLIS

Lacado mate salvia 159, texturizado
mate madreperla y texturizado roble termotratado.

Laqué sauge 159 mat, texturé nacre mat et texturé
chène thermo-traité.

Matt lackiert Salbei 159, Rau matt Perlmutt und Rau
Thermoeiche.

Páginas de síntesis

Descriptifs

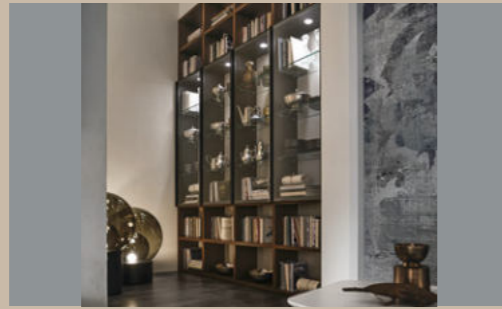
Seitenübersicht

Textos en español,
francés y alemán

Textes en espagnol,
français et allemand

Texte in spanisch,
französisch und deutsch

pag. 153



UNIT — A066
L/W 249 P/D 30 H 291,5 cm

+ project plus — METROPOLIS

Texturizado roble termotratado y texturizado mate madreperla.

Texturé chêne thermo-traité et texturé nacre mat.

Rau Thermoeiche und Rau matt Perlmutt.

pag. 154-155



UNIT — A053
L/W 381 P/D 40 H 219,5 cm

+ project plus — METROPOLIS

Lacado mate azul niño 155.

Laqué bleu pastel 155 mat.

Matt lackiert Pastellblau 155.

pag. 164-165



UNIT — A028
L/W 327 P/D 40/51 H 219,5 cm

+ project plus — DIAGONAL

Texturizado roble termotratado, lacado mate hot 127 y texturizado cemento oscuro.

Texturé chêne thermo-traité, laqué hot 127 mat et texturé ciment foncé.

Rau Thermoeiche, matt lackiert Hot 127 und Rau Zement dunkel.

pag. 166-167



UNIT — A121
L/W 381 P/D 28/40 H 183 cm

+ project plus — DIVIDER

Texturizado mate madreperla, texturizado roble termotratado y metal salvia 159.

Texturé nacre mat, texturé chêne thermo-traité et métal sauge 159.

Rau matt Perlmutt, Rau Thermoeiche und Metall Salbei 159.

pag. 168-169



UNIT — A122
L/W 345 - P/D 40 - H 183,5 cm

+ project plus — ANTA SCORREVOLE / DIVIDER

Texturizado mate antracita, texturizado trenzado oscuro y metal madreperla 124.

Texturé anthracite mat, texturé Intreccio foncé et métal nacre 124.

Rau matt Anthrazit, Rau Geflecht dunkel und Metall Perlmutt 124.

pag. 156-157



UNIT — A118
L/W 453 P/D 28/30/51 H 219,5 cm

+ project plus — REGOLO

Texturizado cemento cantera, texturizado mate antracita y lacado mate azul niño 155.

Texturé ciment carrière, texturé anthracite mat et laqué bleu pastel 155 mat.

Rau Zement Cava, Rau matt Anthrazit hell und matt lackiert Pastellblau 155.

pag. 160-161



UNIT — A119
L/W 147 P/D 41 H 147,5 cm

UNIT — A120
L/W 183 P/D 40 H 147,5 cm

+ project plus — SCRITTOIO INTEGRATO

Texturizado mate antracita y decoración 913.

Texturé anthracite mat et décor graphique 913.

Rau matt Anthrazit und Grafikmuster 913.

E' vietata ogni riproduzione totale e parziale in Italia e all'estero.

Reproduction of all or any part of this publication in Italy or in any other country is prohibited.



product design
ROSSI & CO.
art direction and styling
ROSSI & CO.
graphic design
ROSSI & CO.
photography
STUDIO INDOOR
color separation
Z13
print
OGM



TOMASELLA.IT

