

EMOTION

— *update 2019*



TOMASELLA



EMOTION

— *news 2018*

letti e contenitori — beds and bedroom furniture	4
sistema armadi — wardrobes system	74
coordinati tessili — textile coordinates	110
pagine tecniche — technical information	114
pagine di sintesi — summaries	129

«La notte Tomasella è un concentrato di emozioni, che si esprimono attraverso arredi che fanno sognare.

Letti, contenitori e armadi hanno design originali, si vestono di grafiche decorative o finiture materiche e sono soluzioni funzionali per tutta la notte»

night lifestyle

« Tomasella's bedrooms are the quintessence of emotions expressed through the furniture of your dreams. Functional beds, cabinets and wardrobes with original designs covered with decorative graphic or textured finishes accompany you throughout the night »

letti e contenitori

beds and bedroom furniture

pag. 4



Il letto è l'arredo principale della zona notte e viene abbinato a comodini, comò o settimanali per creare ambienti completi sia dal punto di vista estetico che funzionale.

All bedrooms centre around a bed which is paired with bedside units, a chest-of-drawers or narrow drawer chests. This furniture set creates rooms that are complete both from an aesthetic and a functional viewpoint.

sistema armadi

wardrobes system

pag. 74



Scorrevole o battente, l'armadio dà più spazio alla notte. Tante soluzioni per contenere, ma anche per valorizzare una parete con un arredo che può essere elegante e decorativo.

With sliding or hinged doors, a wardrobe adds extra space to any bedroom. We offer many storage ideas that can also add a decorative touch to the space against any wall.

«Una cornice di legno racchiude e valorizza la testiera imbottita. Come un quadro, il letto rende unica e preziosa la notte con la sua forma elegante, la ricercata combinazione di materiali e la particolare cura dei dettagli» — *Bahia*

bahia

letto --- bed

«A wooden frame surrounds and enhances the upholstered headboard. Just like a picture, this bed with its elegant shape, refined combination of materials and special care to detail turns the night into a unique, precious experience»



Bahia — letto / bed

Legno rovere termocotto
e cat.B econabuk 12.

Heat-treated oak wood and cat.
B eco-nubuck 12 eco-leather.

Capitol — contenitore / unit

Comodini e comò legno rovere
termocotto e laccato opaco hot 127.

Heat-treated oak wood and matt hot
grey 127 lacquered bedside unit and
chest-of-drawers.

Bolle — specchiera / mirror

Vision / Vision gola — armadio / wardrobe
composizione - arrangement 550
L/W 280 P/D 72 H 255 cm

Due ante scorrevoli vetro stopsol con
profili metallo hot 127. Struttura laccato
opaco hot 127.

Two Stopsol glass sliding doors with hot
grey 127 metal trims. Matt hot grey 127
lacquered carcass.





«La testiera è ulteriormente valorizzata da due tagli di luce che danno risalto al design. Un dettaglio utile per la lettura e decorativo per la camera da letto. L'atmosfera si fa più soft e la notte entra in scena» — *Bahia*



«The headboard is further enhanced by two lights that cross it in different directions, setting off its design. As well as being a useful reading light, this detail adds a decorative touch to the bedroom, creating a soft atmosphere for a spectacular night»

«Un letto completamente imbottito, dalla testiera al ring. Le cuciture ribattute e a contrasto sono il dettaglio sartoriale che, mettendo in risalto i bordi, sottolinea con stile i morbidi volumi. Per stanze da sogno» — *Sogno*

sogno

letto --- bed

«A fully upholstered bed, from the headboard to the bed frame. The contrasting flat felled seams are tailoring details that stylishly underline the soft volumes by giving prominence to the edges. For dream-like rooms»



Sogno — letto / bed

Cat.B ecopelle vintage 1009
con cordoncino scuro.

Heat-treated oak wood and
cat. B eco-nubuck 12.

Capitol — contenitore / unit

Comò e comodini
laccato opaco smoke 128
e materico opaco madreperla.

Matt smoke 128 and matt
textured mother of pearl
lacquered chest-of-drawers
and bedside units.

Metropolis — armadio / wardrobe
composizione - arrangement 320
L/W 304 P/D 63 H 255 cm

Sei ante battenti vetro fumè 363, metallo
antracite 160. Struttura materico
opaco madreperla.

Six smoked glass 363 and anthracite
160 metal hinged doors.
Textured matt mother of pearl carcass.





Dal comò a tre cassetti ai comodini, il design è minimal ma un dettaglio si fa notare: le superfici lisce e senza maniglie sono integrate a un fianco con colore a contrasto. La notte è più originale.

The 3-drawer chest and the bedside units feature a minimalist design with an unusual touch: the plain, handle-less surfaces are paired with a contrasting-coloured side panel to add more originality to your nights.

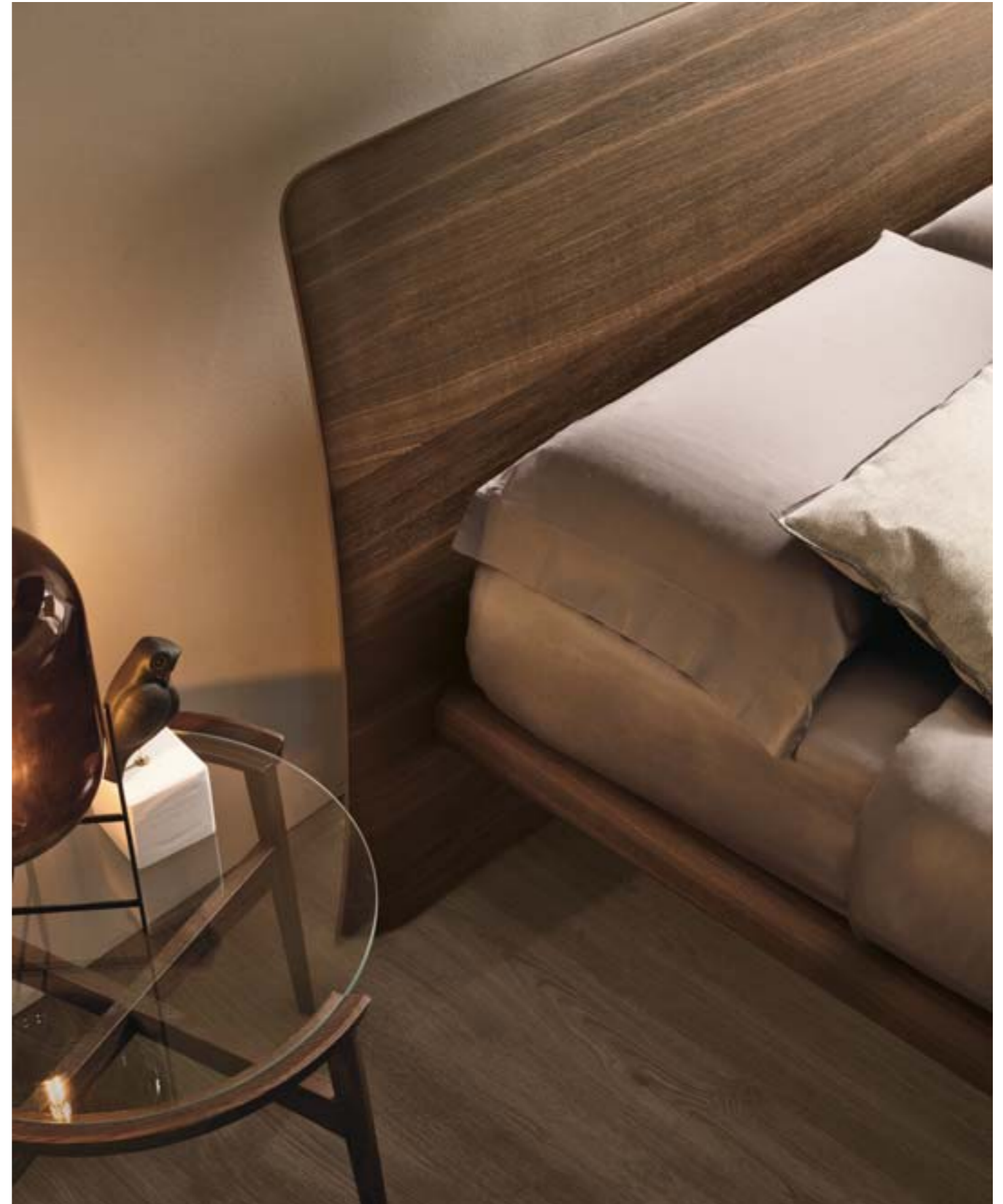


«La testiera leggermente curvata e appoggiata a terra è l'elemento distintivo del letto Prado. La notte è soft nella forma e nella tonalità. Disponibile anche con contenitore imbottito» --- *Prado*

prado

letto --- bed

«The slightly curved, floor-standing headboard distinguishes the Prado bed whose shape and shade create a soft, night-time atmosphere. Available with storage base»



Prado — letto / bed

Legno rovere termocotto.

Heat-treated oak wood.

Dolcevita — contenitore / unit

Comò e comodini legno rovere termocotto.

Heat-treated oak wood chest-of-drawers and bedside units.

Bloom — tavolino / bedside table

Legno rovere termocotto e vetro trasparente 320.

Heat-treated oak wood and transparent 320 glass.

Krizia — armadio / wardrobe
composizione - arrangement 541
L/W 280 P/D 67 H 255 cm

Due ante scorrevoli laccato opaco carta da zucchero 155 e inserto laccato opaco antracite 160.

Two matt blue grey 155 lacquered sliding doors with matt anthracite 160 lacquered inserts.



«Gli angoli arrotondati del comò richiamano le linee morbide del letto. La notte sceglie le curve per essere meno rigorosa e più morbida» — *Dolcevita*



«The rounded edges of the Dolcevita chest-of-drawers match the soft lines of the bed. The night chooses curves for a softer, plusher style»

Prado — letto / bed

Legno laccato poro aperto madreperla 224.

Open-pore mother of pearl 224 lacquered wood.

Bolle — specchiera / mirror

Pass — contenitore / unit

Comodini laccato opaco smoke 128.

Comò laccato opaco madreperla 124

Bedside units in matt smoke 128 lacquer.

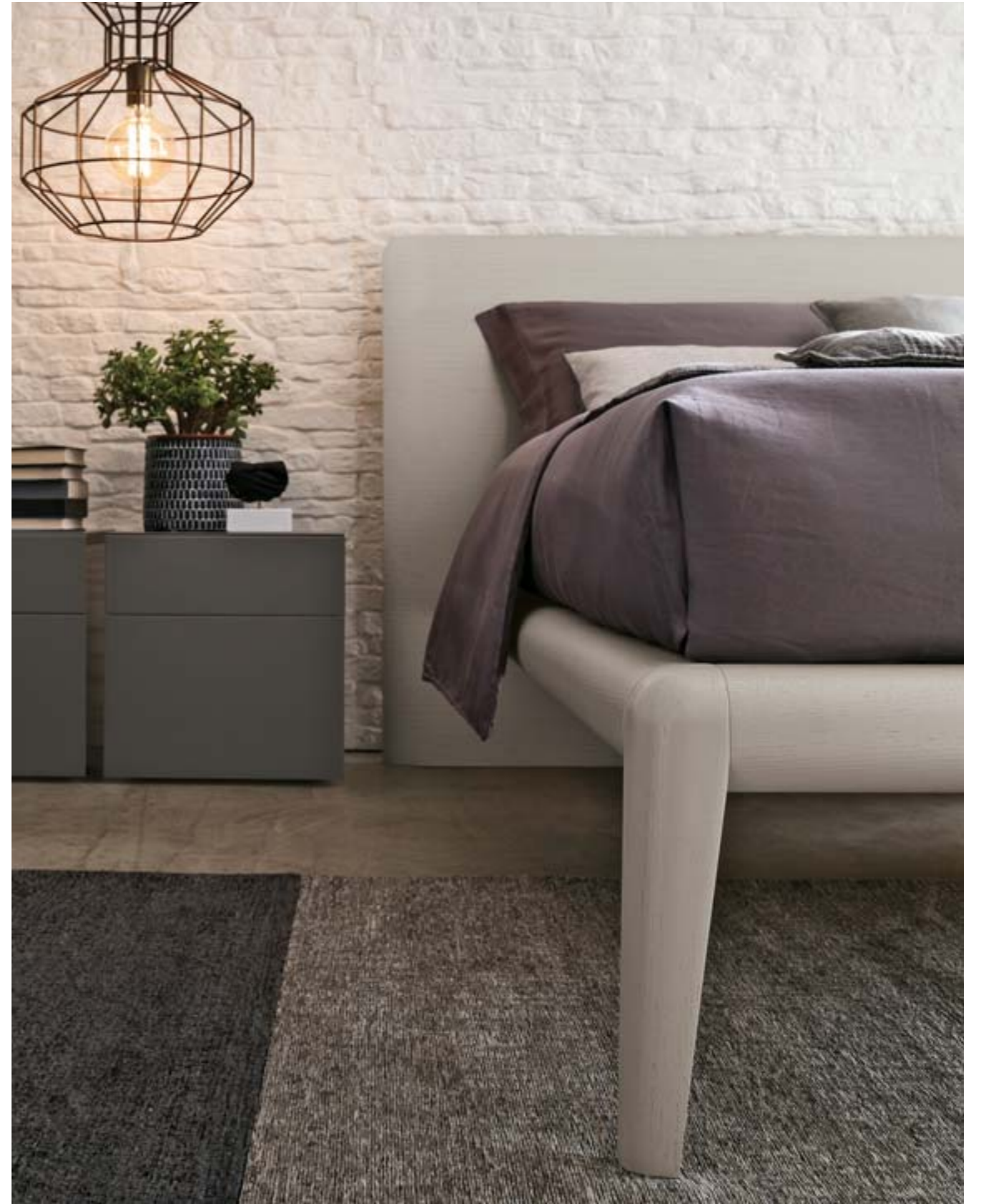
Chest-of-drawers in matt mother of pearl 124 lacquer.





— La curvatura della testiera è una questione di stile, ma anche di ergonomia: mentre si legge o si guarda la tv, l'appoggio è più confortevole.

— The curved headboard is both a matter of style and of ergonomics: it's more comfortable lean against when reading or watching TV.



Prado —
letto con contenitore /
bed with storage base.

Legno rovere termocotto
e cat. B ecopelle vintage 102.

Heat-treated oak wood and
cat. B vintage 102 eco-leather.

Bogart — contenitore / unit

Laccato poro aperto
madreperla 224.

Open-pore mother of pearl
224 lacquer.



Il letto Prado con contenitore
invita al relax, ma anche
all'ordine:
nasconde dentro di sé uno
spazio capiente dove riporre
le coperte voluminose e
ingombranti.

The Prado bed with its storage
base spells relaxation but is also
an invitation to tidy up
your bulky, cumbersome
blankets in the space hidden
away under the bed base.

«I grandi cuscini, in tre configurazioni diverse, sembrano solo appoggiati alla testiera, in realtà sono perfettamente integrati. Una soluzione soft ma compatta allo stesso tempo, per stare comodi con stile» — *Nikki*

nikki

sistema letto --- system bed

«The three, large, different-sized cushions look as if they are just leaning against the headboard while they are actually perfectly integrated into it. A soft yet compact solution that offers stylish comfort»



Nikki N03 — letto / bed

Materico opaco antracite.
Cuscini cat. B ecopelle vintage
1008, cat. B ecopelle vintage 107,
cat. 1/one easy 20.

Matt textured anthracite.
Cat. B vintage 1008 eco-leather,
cat. B vintage 107 eco-leather and
cat. 1/one easy 20 cushions.

Replay — contenitore / unit

Comodino materico cemento cava e
top materico opaco antracite.

Comodino sospeso materico opaco
antracite e top materico cemento cava.

Comò materico opaco madreperla,
materico cemento cava, materico
opaco antracite e top materico opaco
antracite.

Textured cava cement bedside unit
with matt textured anthracite top.

Matt textured anthracite wall-hung
bedside unit with textured cava
cement top.

Matt textured mother of pearl,
textured cava cement and matt
textured anthracite chest-of-drawers
with matt textured anthracite top.

Ring — mensola / shelf

Materico opaco antracite
e metallo madreperla 124.

Matt textured anthracite and
mother of pearl 124 metal.





Un singolo modulo sospeso come toilette oppure giochi di volumi che danno forma a comò e comodini: la notte può essere personalizzata con arredi originali e diverse combinazioni cromatiche.

A single, wall-hung module used as a dressing table or an interplay of modules that make up chests-of-drawers and bedside tables: you can customise your night with original furniture and an assortment of colour combinations.



Modula — armadio / wardrobe
Composizione - arrangement 600
L/W 373 P/D 62 H 255 cm

Otto ante battenti in materico
poro aperto madreperla, metallo
antracite 160. Cassettoni in
materico nodato chiaro.

Eight matt textured open-pore
mother of pearl and anthracite
160 metal hinged doors.
Light knotted textured deep
drawers.

Nikki N02 — letto / bed

Materico nodato chiaro,
e cuscini cat. C lino froissè 100.

Light knotted textured structure
and cat. C froissè linen 100
cushions.

Capitol — contenitore / unit

Comò e comodini materico
nodato chiaro e materico
opaco madreperla.

Light knotted textured and matt
textured mother of pearl chest-
of-drawers and bedside units.





— Il fianco del comodino è coordinato alla finitura del letto. Nella notte, gli arredi dialogano tra di loro.

— The bedside unit's side panel is coordinated with the finish of the bed for a magical night marked by interacting furniture.



«Il comò rimane uno degli arredi principali della camera da letto, soprattutto per la sua funzionalità e capienza. Reinterpretato con design e finiture particolari si adatta benissimo a tutte le notti moderne» — *Capitol*

«Thanks to its functionality and size, the chest-of-drawers is still one of the most important cabinets in any bedroom. When made over with an original design and uncommon finishes it adapts perfectly to all modern nights»



Nikki N04 — letto / bed

Materico nodato chiaro. Cuscini cat.C lino froissé 100, cat.B ecopelle vintage 102, cat.C lino froissé 05 e cat.B econabuk 02.

Light knotted textured finish. Cat. C froissé linen 100, cat.B vintage 102 eco-leather, cat.C froissé linen 05 and cat.B eco-nubuck 02 cushions.

Athena — contenitore / unit

Comodini e settimanale materico opaco madreperla, inserto materico nodato chiaro.

Bedside units and narrow drawer chest in matt textured mother of pearl with light knotted textured inserts.



«La testiera è slim, per coloro che cercano anche in un letto imbottito una comodità strutturata e geometrica. Un taglio classico interpretato con cuciture a vista molto moderne, che lo rendono versatile e adattabile a più stili» — *Zeno*

zeno

letto --- bed

«The headboard is slim; perfect for those looking for well-structured, geometric comfort in an upholstered bed. Traditional lines interpreted using very modern exposed seams that make this bed versatile and adaptable to various style»



Remix + Double — armadio / wardrobe
Composizione - arrangement 551
L/W 280 P/D 67 H 255 cm

Ante scorrevoli materico
cemento cava e materico nodato chiaro.

Textured cava cement and light knotted
textured sliding doors.

Zeno — letto / bed

Cat. B ecopelle vintage 1009
e cucitura 3426.

Cat. B vintage 1009 eco-leather
and 3426 stitching.

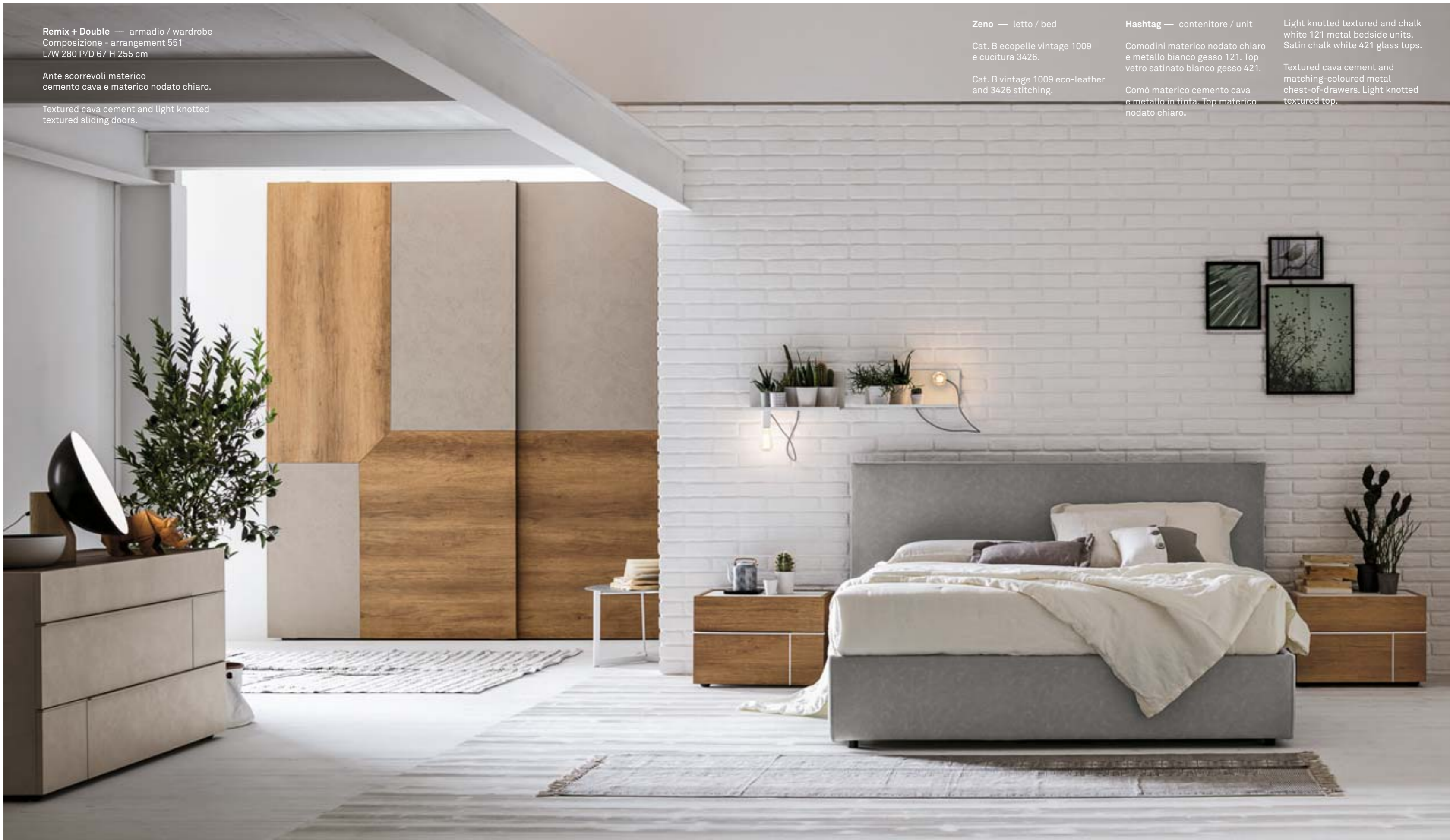
Hashtag — contenitore / unit

Comodini materico nodato chiaro
e metallo bianco gesso 121. Top
vetro satinato bianco gesso 421.

Comò materico cemento cava
e metallo in tinta. Top materico
nodato chiaro.

Light knotted textured and chalk
white 121 metal bedside units.
Satin chalk white 421 glass tops.

Textured cava cement and
matching-coloured metal
chest-of-drawers. Light knotted
textured top.





La notte è giovane: le maniglie, a contrasto o tono su tono ma sempre in rilievo, disegnano su comò e comodini Hashtag dei segni grafici originali. Il design parla un nuovo linguaggio, quello dei social.

The night is young: raised handles - either tone-on-tone or in contrasting shades - draw original graphic marks on Hashtag chests-of-drawers and bedside units. Design speaks a new tongue: the language of social networks.



«Una linea orizzontale evidenzia l'orientamento della testiera. Tonalità e materiali a contrasto sottolineano il gioco grafico e lo esaltano» —*Joker*

joker

letto --- bed

«A horizontal line sets off the design of the headboard. Contrasting shades and materials emphasise and enhance the interplay of lines»



Joker — letto / bed

Materico nodato chiaro e materico cemento chiaro.

Light knotted textured and textured light cement finishes.

Hashtag — contenitore / unit

Comodini materico cemento chiaro, top materico nodato chiaro e profilo metallo madreperla 124.

Comò laccato opaco smoke 128, profilo metallo madreperla 124.

Bedside units in textured light cement with light knotted textured tops and mother of pearl 124 metal grip edges and trims.

Matt smoke 128 lacquered chest-of-drawers with matt mother of pearl 124 metal grip edges and trims.



«Un sistema che si ispira ai profili e ai panorami delle città metropolitane: pannelli di diverse altezze e finiture compongono la testiera e dietro il letto disegnano livelli alti e bassi che hanno un forte impatto decorativo sulla parete e su tutta la stanza» — *Skyline*

skyline

sistema letto --- bed system

«A system inspired by the skylines and views of metropolitan cities. Panels in different heights and finishes make up the headboard and create a high-impact, up-and-down decorative motif on the wall that enhances the whole room»



Hashtag — contenitore / unit

Comodini materico opaco bianco gesso, grafica 733 e profili metallo bianco gesso 121.

Comò materico cemento chiaro e profili metallo madreperla 124.

Bedside units in textured matt chalk white and graphic 733 décor with matt chalk white 121 metal grip edges.

Chest-of-drawers in textured light cement with matt mother of pearl 124 grip edges and trims

Skyline black and white — letto / bed

Ring vaschetta cat. 1-One Atom 01 e piede Victor metallo bianco gesso 121.

Flared Vaschetta bed frame in cat. 1-One Atom with Victor feet in chalk white 121 metal.





— La finitura cemento chiaro dà forma e matericità al comò Hashtag, nella sua interezza. La notte è un'esperienza visiva e tattile, allo stesso tempo.

— The light cement finish shapes and adds texture to the whole Hashtag chest-of-drawers. The bedroom offers an experience that is at once visual and tactile.



«Il letto Fusion è, di nome e di fatto, una totale fusione di elementi: testiera, giroletto e comodino formano un tutt'uno di grande presenza scenica» — *Fusion*

fusion

sistema letto --- bed system

«By word and by deed, the Fusion bed blends various elements together, forming a spectacular whole made up of a headboard, bed frame and bedside units»



Fusion — letto / bed

Materico nodato scuro
e cat. B ecopelle vintage 1009.

Dark knotted textured finish
paired with cat. B vintage 1009
eco-leather.

Pitti — armadio / wardrobe
Composizione - arrangement 543
L/W 280 P/D 67 H 255 cm

Due ante scorrevoli, struttura e ante
laccato opaco hot 127, inserto maniglia
materico nodato scuro e profilo metallo
hot 127.

Two sliding doors and carcass in matt
hot grey 127 lacquer / dark knotted
textured handle inserts and hot grey 127
metal trims.



Fusion — letto / bed

Materico poro aperto
madreperla, cat. 1-One Easy 20.

Textured open-pore mother of
pearl / cat. 1-One Easy 20 fabric.



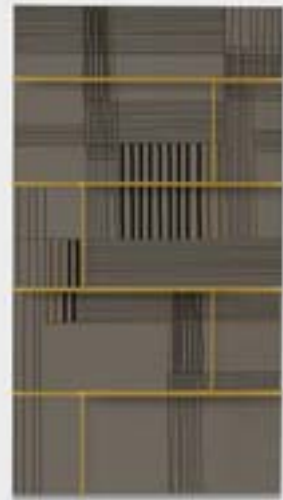
Hashtag — contenitore / unit

1. Laccato opaco smoke 128, grafica 734 e profilo maniglia metallo zafferano 158
2. Materico opaco bianco gesso, grafiche 733 e profilo maniglia metallo antracite 160
3. Materico opaco bianco gesso, grafiche 731 e profilo maniglia metallo bianco gesso 121.
4. Materico opaco bianco gesso, grafiche 730 e profilo maniglia metallo bianco gesso 121.

1. Matt smoke 128 lacquer, graphic 734 décor and saffron 158 metal grip edges.
2. Textured matt chalk white, graphic 733 décor and anthracite 160 metal grip edges.
3. Textured matt chalk white, graphic 731 décor and chalk white 121 metal grip edges.
4. Textured matt chalk white, graphic 730 décor and chalk white 121 metal grip edges.



1.



2.



3.



4.



Hashtag — contenitore / unit

Materico opaco bianco gesso, grafica 713 e profili metallo antracite 160.

Textured matt chalk white and graphic 713 décor with anthracite 160 metal grip edges and trims.



«La testiera è formata da due cuscini over size sorretti da una doga orizzontale. Il letto diventa estremamente confortevole, come un divano, perfetto per dormire ma anche per rilassarsi dopo un'intensa giornata» — *Piuma*

piuma
letto --- bed

«The headboard is made of two oversized cushions supported by a horizontal slat. The bed becomes extremely comfortable, just like a sofa, perfect to sleep in but also to relax on at the end of a stressful day»





Piuma — letto / bed

Cat. C lino froissè 123, materico nodato scuro e piede Victor metallo antracite 160.

Cat. C froissè linen 123 and dark knotted textured finish with Victor feet in antracite 160 metal.

Hashtag — contenitore / unit

Comò e comodini materico nodato scuro, top vetro satinato salvia 459 e profilo metallo salvia 159.

Chest-of-drawers and bedside units in dark knotted textured finish with satin sage 459 glass top and sage 159 metal grip edges and trims.

«Con la loro varietà di misure e i particolari segni geometrici che li caratterizzano, gli specchi creano una parete tutta da guardare. Singolarmente o abbinati, stanno bene in camera da letto e in qualsiasi altra stanza della casa»
— *Specchiere Hashtag*



Hashtag — specchiere / unit

Materico opaco madreperla, profilo laccato opaco antracite 160 e specchio argentato 381.

Textured matt mother of pearl, matt anthracite 160 lacquered trims and silver 381 mirror.

Atlante — contenitore / unit

Materico intreccio scuro e metallo antracite 160.

Textured matt mother of pearl, matt anthracite 160 lacquered trims and silver 381 mirror.

«The many sizes and original geometric designs of these mirrors turn the walls into a main attraction. By themselves or combined, they look great in the bedroom or in any other room of your choice»

«L'anta in vetro con telaio in finitura antracite
reinterpreta la funzione del classico armadio:
progettato per “nascondere” indumenti e oggetti,
Metropolis mette in vista e in luce lo stile.
Una scelta di tendenza» — *Metropolis*

metropolis

armadio battente — armadio battente

«The glass door with its anthracite finish frame modifies the function of the classic wardrobe, designed to hide away clothes and belongings. Metropolis exposes and showcases style. A trendy choice»



Metropolis — armadio / wardrobe
composizione - arrangement 320
L/W 304 P/D 63 H 255 cm

Sei ante battenti vetro fumè 363,
metallo antracite 160.
Struttura materico opaco madreperla.

Six smoked glass 363 and anthracite 160 metal
hinged doors. Textured matt mother of pearl
carcass.



Metropolis + Gola — armadio / wardrobe
composizione - arrangement 321
L/W 373 P/D 63 H 255 cm

Otto ante battenti vetro fumè 363,
materico rovere termocotto e metallo antracite 160.
Struttura materico rovere termocotto.

Eight smoked glass 363, textured heat-treated oak
and anthracite 160 metal hinged doors.
Textured heat-treated oak carcass.



«Ante battenti e cassetti estraibili: l'armadio si può personalizzare nelle finiture e nelle misure, ma anche nella composizione dei moduli. I cassetti, solitamente all'interno, escono allo scoperto e rendono originale l'armadio» — *Modula*

modula

armadio battente — hinged door wardrobe

«Hinged doors and removable drawers: you can customise the way this wardrobe's modules are arranged as well as its finishes and sizes. The drawers — usually hidden away on the inside — come out into the open and add a touch of originality to the wardrobe»



Modula — armadio / wardrobe
Composizione - arrangement 600
L/W 373 P/D 62 H 255 cm

Otto ante battenti in materico poro aperto madreperla.
Cassettoni in materico nodato chiaro. Maniglia metallo antracite 160. Struttura materico poro aperto madreperla.

Eight doors textured open-pore mother of pearl hinged doors.
Light knotted textured deep drawers. Anthracite 160 lacquered metal handle.
Textured open-pore mother of pearl carcass.



«La maniglia ricorda nella forma una goccia che scende lungo l'anta battente dell'armadio. A volte è sufficiente il dettaglio di un'apertura per dare personalità all'armadio e un tocco decorativo all'ambiente» — *Drop*

drop

armadio battente ---hinged door wardrobe

«The shape of this handle looks like a teardrop that runs down the front of the wardrobe's hinged doors. The detail of a handle is sometimes all it takes to add character to a wardrobe and a creative touch to the room»





Drop — armadio / wardrobe
Composizione - arrangement 322
L/W 304 P/D 62 H 255 cm

Sei ante battenti materico opaco madreperla. Maniglia metallo smoke 128. Struttura materico opaco madreperla.

Six hinged wardrobes in matt textured mother of pearl. Smoke 128 metal handle. Matt textured mother of pearl carcass.

liscia

armadio battente --- hinged door wardrobe

«Semplice ed essenziale nella forma, materico e originale nella finitura: l'armadio battente con maniglia applicata si fa notare per l'effetto cemento, perfetto negli ambienti moderni»

Liscia — armadio / wardrobe
Composizione - arrangement 323
L/W 404,5 P/D 62 H 255 cm

Otto ante materico cemento cava
con maniglia Segno in tinta.
Struttura materico cemento cava.

Eight textured cava cement doors with
matching-coloured Segno handles.
Textured cava cement carcass.

«A plain, minimalist shape paired with an original, textured finish: the hinged door with a protruding handle gets itself noticed thanks to its cement effect which is perfect for modern settings»



«L'anta Vision con tv incorporata unisce design e funzionalità. I fili non si vedono, grazie alla soluzione integrata nell'anta con meccanismo di trascinamento cavi, progettato per scorrere in sicurezza anche quando lo schermo è acceso. Tutto è già predisposto, compresi i cavi antenna e satellite, e soprattutto “nascosto”, garantendo la massima pulizia delle linee» — *Vision*

vision

armadio scorrevole — sliding door wardrobe

«The Vision door pairs design with functionality. Wires are invisible thanks to a device integrated in the door that allows the cables to follow the door safely when it slides open or shut, even when the TV is on. Everything is ready to be connected, including the aerial and satellite cables, and, more importantly, all the electrics are concealed to ensure the ultimate in uncluttered lines»



— Plus tecnici ed estetici

Minimo ingombro all'interno dell'armadio che consente così un prezioso doppio utilizzo.

Il cablaggio è stato configurato per un'ottimale possibilità di intervento sul televisore, la migliore di tutta la categoria.

“Massima libertà di scelta per la vostra TV -fino ai 39” per l'anta da 117,2 o ai 43” per il moduloda 136,2-, il modulo Vision permette la regolazione in altezza e profondità per il posizionamento del vostro televisore, garantendo l'utilizzo di qualsiasi televisore attualmente in commercio per le misure di riferimento fino a 75mm di spessore, lasciandovi la libertà di scegliere la vostra marca preferita.”

— Plus tecnici ed estetici

Utmost freedom of choice for your TV: up to 39” for the 117.2 cm door and up to 43” for the 136.2 cm module. The Vision module can be adjusted in height and depth so that your television is in the ideal position. You can also choose your favourite TV brand from those currently on the market, as long as you stick to the specified sizes and do not exceed 75 mm in depth.

The wiring is configured to be the easiest to reach in its category. Very little space is taken up by the TV so that the wardrobe can offer the best of two functions.

Vision / Vision gola — armadio / wardrobe

Composizione - arrangemet 550

L/W 280 P/D 72 H 255 cm

Due ante scorrevoli vetro stopsol con profili metallo hot 127. Struttura laccato opaco hot 127.

Two Stopsol glass sliding doors with hot grey 127 metal trims. Matt hot grey 127 lacquered carcass.



Vision / 2 settori — armadio / wardrobe
Composizione - arrangement 542
L/W 280 P/D 72 H 255 cm

Due ante scorrevoli materico opaco madreperla, vetro stopsol con profili metallo opaco madreperla 124. Struttura materico opaco madreperla.

Two matt textured mother of pearl and Stopsol glass sliding doors with matt mother of pearl 124 metal trims. Matt textured mother of pearl carcass.



«L'armadio Krizia viene messo in luce da una sottile striscia luminosa che lo attraversa. Il design si illumina e si fa notare nella notte» — *Krizia*

krizia

armadio scorrevole — sliding door wardrobe

«The Kryzia wardrobe is highlighted and crossed by a discreet strip of light which illuminates design and gets itself noticed at night»



Krizia — armadio / wardrobe
Composizione - arrangement 541
L/W 280 P/D 67 H 255 cm

Due ante scorrevoli struttura, ante laccato opaco carta da zucchero 155 e inserto laccato opaco antracite 160.

Two matt blue-grey 155 lacquered sliding doors and carcass with matt anthracite 160 lacquered inserts.



«L'armadio ha una geometria semplice valorizzata da inserti materici che, oltre ad essere decorativi, diventano presa maniglia per rendere più agevole l'apertura scorrevole. La notte ha più spazio e stile» — *Pitti*

pitti

armadio scorrevole — sliding door wardrobe

«The wardrobe features simple geometric lines enhanced by textured inserts that, as well as being decorative, are designed to conveniently open the sliding doors. For a more spacious and stylish night»



Pitti — armadio / wardrobe
Composizione - arrangement 540
L/W 361,6 P/D 67 H 255 cm

Struttura e ante in materico opaco madreperla, inserto maniglia materico intreccio scuro e profilo metallo antracite 160.

Matt textured mother of pearl carcass and doors, textured dark Intreccio handle inserts and anthracite 160 metal trims.



Pitti — armadio / wardrobe
Composizione - arrangement 543
L/W 280 P/D 67 H 255 cm

Due ante scorrevoli, struttura e ante
laccato opaco hot 127, inserto maniglia
materico nodato scuro e profilo metallo
hot 127.

Two sliding doors and carcass in matt hot
grey 127 lacquer, dark knotted textured
handle inserts and hot grey 127 metal
trims.



«Linee dritte, orizzontali e verticali, e linee diagonali si incontrano sulle ante dell'armadio disegnando inedite geometrie. La funzionalità dell'arredo diventa estremamente decorativa.» — *Remix & Double*

remix+double

armadio scorrevole — sliding door wardrobe

“Straight, horizontal, vertical and diagonal lines meet on the doors of this wardrobe, drawing original geometric shapes. The wardrobe's function becomes exceedingly decorative.»



Remix + Double — armadio / wardrobe
Composizione - arrangement 551
L/W 280 P/D 67 H 255 cm

Ante scorrevoli e struttura materico
cemento cava e materico nodato chiaro.

Textured cava cement and light knotted textured
finish sliding doors and carcass.

Double — armadio / wardrobe
Composizione - arrangement 552
L/W 280 P/D 67 H 255 cm

Due ante scorrevoli
materico nodato chiaro e
materico opaco bianco gesso.
Struttura in materico opaco
bianco gesso.

Two sliding doors with a light
knotted textured and textured matt
chalk white finish. Textured matt
chalk white carcass.



Coordinati in Raso

Satin coordinates



Coordinato copri-piumino in raso tinta unita.
Coordinato composto da sacco, lenzuolo sotto senza angoli e federe in raso.

Coordinated plain-coloured satin duvet cover
Coordinated bed linen consisting of a cover, a loose mattress sheet and pillow cases in satin.



Coordinato copri-lenzuolo in raso trapuntato tinta unita.
Coordinato composto da lenzuolo sopra, lenzuolo sotto senza angoli e federe in raso e trapunta.

Coordinated plain-coloured quilted satin bedspread.
Bed linen consisting of a top sheet, a loose mattress sheet and pillow cases and quilt.

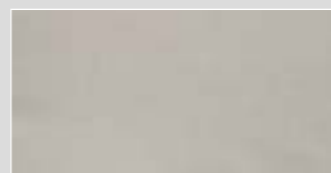
Optional



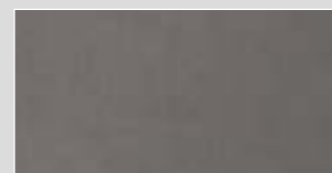
Optional scaldapiedi in raso trapuntato tinta unita.
Optional plain-coloured quilted satin foot warmer.

Raso, colori disponibili

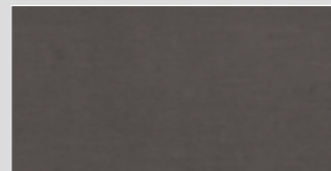
Satin colours available



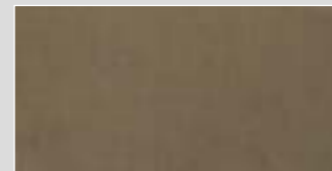
Ostrica



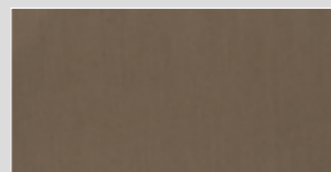
Baguio



Grisaglia



Terrazza



Riccio

Coordinati in Raso Stampato

Printed Satin coordinates



Coordinato copri-piumino in raso stampato.
Coordinato composto da, lenzuolo sotto senza angoli, federe e sacco in raso stampato.

Coordinated printed satin duvet cover.
Bed linen consisting of a loose mattress sheet, printed satin pillow cases and cover.



Coordinato copri-lenzuolo in raso stampato trapuntato baguette.
Coordinato composto da lenzuolo sopra, lenzuolo sotto senza angoli e federe in raso e trapunta baguette con grafica stampata.

Coordinated “baguette” quilted printed satin bedspread.
Bed linen consisting of a top sheet, a loose mattress sheet and pillow cases in satin and “baguette” quilted satin with a printed design.

Optional



Optional scaldapiedi in raso trapuntato baguette.
“Baguette” quilted satin foot warmer.

Raso stampato, grafiche disponibili

Printed satin designs available



800



801



833



837

Coordinati in Lino

Linen coordinates



Coordinato copri-piumino in lino tinta unita. Coordinato composto da sacco, lenzuolo sotto senza angoli e federe in lino.

Coordinated plain-coloured linen duvet cover. Bed linen consisting of a cover, a loose mattress sheet and pillow cases in linen

Coordinato copri-lenzuolo in lino trapuntato baguette. Coordinato composto da lenzuolo sopra, lenzuolo sotto senza angoli e federe in lino, trapunta baguette in lino.

Coordinated “baguette” quilted linen bedspread. Bed linen consisting of a top sheet, a loose mattress sheet and pillow cases in linen and “baguette” quilted linen.

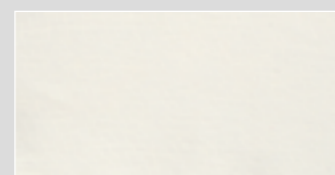
Optional



Scaldapiedi in lino trapuntato baguette. “Baguette” quilted linen foot warmer.

Lino, colori disponibili

Linen colours available



Avorio



Naturale

Coordinati in Cotone double-face

Double-faced cotton coordinates



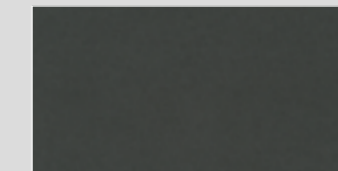
Coordinato copri-piumino in cotone double-face. Coordinato composto da sacco double-face (scuro lato superiore, chiaro lato inferiore), lenzuolo sotto senza angoli e federe in cotone.

Coordinated double-faced cotton duvet cover. Bed linen consisting of a double-faced cover (dark top fabric, light backing fabric), a loose mattress cover and pillow cases in cotton.

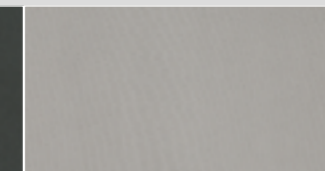
Cotone, colori disponibili

Cotton colours available

DOUBLE-FACE

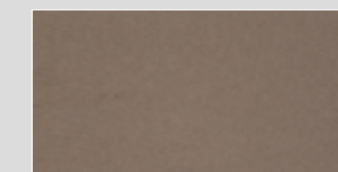


Grigio scuro (sopra/top fabric)

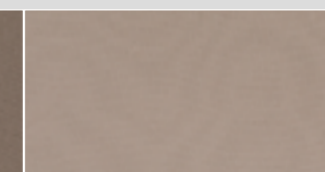


Grigio chiaro (sotto/backing fabric)

DOUBLE-FACE



Marrone (sopra/top) fabric)



Castoro (sotto/backing fabric)

Scaldapiedi trapuntato

Foot warmer quilt



Scaldapiedi disponibile in Raso, Lino e Raso stampato e in tessuti a campionario Cat 1/ ONE, A, B, C e D.

Foot warmer quilt available in Satin, Linen and printed Satin, and in our range of Cat 1/ ONE, A, B, C and D fabrics.r.

pagine tecniche

technical guide

Le finiture, i colori e le grafiche decorative, sono elementi di design che danno stili diversi alla zona notte. Scopri in queste pagine come personalizzare a piacere la nuova collezione Emotion firmata Tomasella.

All bedrooms centre around a bed which is paired with bedside units, a chest-of-drawers or narrow drawer chests. This furniture set creates rooms that are complete both from an aesthetic and a functional viewpoint

News letti & contenitori

BAHIA letto / bed



BAHIA
dimensioni rete-letto /
bed base- bed dimensions

153 X 203	L 178	P 215	H 111
160 X 190	L 185	P 202	H 111
160 X 200	L 185	P 212	H 111
180 X 200	L 205	P 212	H 111
193 X 203	L 218	P 215	H 111

BAHIA CONTENITORE
dimensioni rete-letto /
bed base- bed dimensions

153 X 203	L 178	P 215	H 111
160 X 190	L 185	P 202	H 111
160 X 200	L 185	P 212	H 111
180 X 200	L 205	P 212	H 111
193 X 203	L 218	P 215	H 111

finiture disponibili / available finishes

LACCATI / LACQUERED



colori laccati opachi
a campionario (p.127)
choice of matt lacquered
colours from our range

ESSENZE / WOOD FINISHES



LGN-RT
Rovere Termocotto
Heat-treated Oak



LGN-FO
Frassino Oriente
Eastern Ash

rivestimento testiera e giroletto / headboard and bed frame upholstery

Econabuk, ecopelle e pelle
Eco-nubuck, eco-leather and leather upholstery



Tessuti del campionario
Our range of fabrics



FUSION sistema letto / bed system



FUSION COMODINI INTEGRATI L. 44/
INTEGRATED BEDSIDE UNITS W. 44
dimensioni rete-letto / bed base- bed dimensions

153 X 203	L 250,2	P 213,2	H 95,5
160 X 190	L 257,8	P 200	H 95,5
160 X 200	L 257,8	P 210	H 95,5
180 X 200	L 277,8	P 210	H 95,5
193 X 203	L 290,8	P 213,2	H 95,5

FUSION CON CONTENITORE COMODINI INTEGRATI L. 44/
INTEGRATED BEDSIDE UNITS W. 44 AND STORAGE
dimensioni rete-letto / bed base- bed dimensions

153 X 203	L 250,2	P 213,2	H 95,5
160 X 190	L 257,8	P 200	H 95,5
160 X 200	L 257,8	P 210	H 95,5
180 X 200	L 277,8	P 210	H 95,5
193 X 203	L 290,8	P 213,2	H 95,5

FUSION COMODINI INTEGRATI L. 60/
INTEGRATED BEDSIDE UNITS W. 60
dimensioni rete-letto / bed base- bed dimensions

153 X 203	L 282,2	P 213,2	H 95,5
160 X 190	L 289,8	P 200	H 95,5
160 X 200	L 289,8	P 210	H 95,5
180 X 200	L 309,8	P 210	H 95,5
193 X 203	L 322,8	P 213,2	H 95,5

FUSION CON CONTENITORE COMODINI INTEGRATI L. 60/
INTEGRATED BEDSIDE UNITS W. 60 AND STORAGE
dimensioni rete-letto / bed base- bed dimensions

153 X 203	L 282,2	P 213,2	H 95,5
160 X 190	L 289,8	P 200	H 95,5
160 X 200	L 289,8	P 210	H 95,5
180 X 200	L 309,8	P 210	H 95,5
193 X 203	L 322,8	P 213,2	H 95,5

FUSION 1 COMODINO L. 60 E 1 COMODINO
L. 44 INTEGRATO / 1 INTEGRATED BEDSIDE UNIT W.
60 AND 1 BEDSIDE UNIT W. 44.
dimensioni rete-letto / bed base- bed dimensions

153 X 203	L 266,2 - P 213,2	H 95,5
160 X 190	L 273,8 - P 200	H 95,5
160 X 200	L 273,8 - P 210	H 95,5
180 X 200	L 293,8 - P 210	H 95,5
193 X 203	L 306,8 - P 213,2	H 95,5

FUSION CON CONTENITORE 1 COMODINO L. 60 E 1
COMODINO L. 44 INTEGRATO / 1 INTEGRATED BEDSIDE
UNIT W. 60 AND 1 BEDSIDE UNIT W. 44. WHIT STORAGE
dimensioni rete-letto / bed base- bed dimensions

153 X 203	L 266,2	P 213,2	H 95,5
160 X 190	L 273,8	P 200	H 95,5
160 X 200	L 273,8	P 210	H 95,5
180 X 200	L 293,8	P 210	H 95,5
193 X 203	L 306,8	P 213,2	H 95,5

finiture disponibili / available finishes

MATERICO OPACO / MATT TEXTURED



MT-OC BG
Bianco Gesso
Chalk white

MT-OC MP
Madreperla
Mother of pearl

MT-OC AN
Antracite
Anthracite

MATERICO ESSENZA/ WOOD TEXTURED



MT-RT
Rovere Termocotto
Heat-treated Oak

MT-FO
Frassino Oriente
Eastern Ash

MATERICO NODATO / KNOTTED TEXTURED



MT-RNC
Nodato chiaro
Light Knotted

MT-RNS
Nodato scuro
Dark knotted

MATERICO PORO APERTO / OPEN PORE TEXTURED



MT-PA BG
Bianco Gesso
Chalk white

MT-PA MP
Madreperla
Mother of pearl

MATERICO / TEXTURED



MT-CC
Cemento chiaro
Light cement

MT-CS
Cemento scuro
Dark cement

MT-CV
Cemento Cava
Cava cement

LACCATI PORO APERTO / OPEN PORE LACQUERED



221 PA
Bianco Gesso
Chalk white

222 PA
Panna
Cream

224 PA
Madreperla
Mother of pearl

227 PA
Hot
Hot grey

230 PA
Grigio Piacenza
Piacenza grey

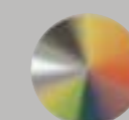
250 PA
Canapa
Hemp

252 PA
Pomice
Pumice

260 PA
Antracite
Anthracite

rivestimento testiera / headboard upholstery

LACCATI / LACQUERED



colori laccati opachi
a campionario (p.127)
choice of matt lacquered
colours from our range

Econabuk, ecopelle e pelle
Eco-nubuck, eco-leather and leather upholstery



Tessuti del campionario
Our range of fabrics





NIKKI
dimensioni rete-letto /
bed base- bed dimensions

153 X 203	L 174,4	P 223,2	H 100
160 X 190	L 182	P 210	H 100
160 X 200	L 182	P 220	H 100
180 X 200	L 202	P 220	H 100
193 X 203	L 215	P 223,2	H 100

NIKKI CONTENITORE
dimensioni rete-letto /
bed base- bed dimensions

153 X 203	L 174,4	P 223,2	H 97,4
160 X 190	L 182	P 210	H 97,4
160 X 200	L 182	P 220	H 97,4
180 X 200	L 202	P 220	H 97,4
193 X 203	L 215	P 223,2	H 97,4



NIKKI N02



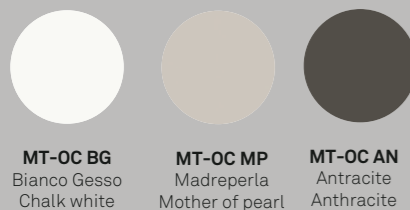
NIKKI N03



NIKKI N04

finiture disponibili / available finishes

MATERICO OPACO / MATT TEXTURED



MT-OC BG
Bianco Gesso
Chalk white

MT-OC MP
Madreperla
Mother of pearl

MT-OC AN
Antracite
Anthracite

MATERICO ESSENZA/ WOOD TEXTURED



MT-RT
Rovere Termocotto
Heat-treated Oak

MT-FO
Frassino Oriente
Eastern Ash

MATERICO NODATO /
KNOTTED TEXTURED



MT-RNC
Nodato chiaro
Light Knotted

MT-RNS
Nodato scuro
Dark knotted

MATERICO PORO APERTO /
OPEN PORE TEXTURED



MT-PA BG
Bianco Gesso
Chalk white

MT-PA MP
Madreperla
Mother of pearl

MATERICO / TEXTURED



MT-CC
Cemento chiaro
Light cement

MT-CS
Cemento scuro
Dark cement

MT-CV
Cemento Cava
Cava cement

LACCATI PORO APERTO / OPEN PORE LACQUERED



221 PA
Bianco Gesso
Chalk white

222 PA
Panna
Cream

224 PA
Madreperla
Mother of pearl

227 PA
Hot
Hot grey

230 PA
Grigio Piacenza
Piacenza grey

250 PA
Canapa
Hemp

252 PA
Pomice
Pumice

260 PA
Antracite
Anthracite

LACCATI / LACQUERED



colori laccati opachi
a campionario (p.127)
choice of matt lacquered
colours from our range

rivestimento testiera / headboard upholstery

Econabuk, ecopelle e pelle
Eco-nubuck, eco-leather and leather
upholstery



Tessuti del campionario
Our range of fabrics

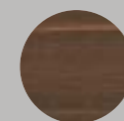


PRADO
dimensioni rete-letto /
bed base- bed dimensions

153 X 203	L 200	P 224,7	H 101
160 X 190	L 200	P 211,5	H 101
160 X 200	L 200	P 221,5	H 101
180 X 200	L 220	P 221,5	H 101

finiture disponibili / available finishes

ESSENZE /
WOOD FINISHES



LGN-RT
Rovere Termocotto
Heat-treated Oak

LACCATI PORO APERTO / OPEN PORE LACQUERED



221 PA
Bianco Gesso
Chalk white



222 PA
Panna
Cream



224 PA
Madreperla
Mother of pearl



227 PA
Hot
Hot grey



230 PA
Grigio Piacenza
Piacenza grey



250 PA
Canapa
Hemp



252 PA
Pomice
Pumice



260 PA
Antracite
Anthracite

PRADO con contenitore / bed with storage base



PRADO CONTENITORE
dimensioni rete-letto /
bed base- bed dimensions

153 X 203	L 200 - P 225,4 - H 101
160 X 190	L 200 - P 212,2 - H 101
160 X 200	L 200 - P 222,2 - H 101
180 X 200	L 220 - P 222,2 - H 101

finiture disponibili / available finishes

ESSENZE /
WOOD FINISHES



LGN-RT
Rovere Termocotto
Heat-treated Oak

LACCATI PORO APERTO / OPEN PORE LACQUERED



221 PA
Bianco Gesso
Chalk white



222 PA
Panna
Cream



224 PA
Madreperla
Mother of pearl



227 PA
Hot
Hot grey



230 PA
Grigio Piacenza
Piacenza grey



250 PA
Canapa
Hemp



252 PA
Pomice
Pumice



260 PA
Antracite
Anthracite

rivestimento ring contenitore / frame and storage base

Econabuk, ecopelle e pelle
Eco-nubuck, eco-leather and leather upholstery



Tessuti del campionario
Our range of fabrics





Comodino 2 cassetti
2-drawer bedside unit
L 66,8 P 40,2 H 43,3

Comò 3 cassetti
3-drawer chest
L 133,1 P 51,2 H 70,4

Settimanale 5 cassetti
5-drawer narrow chest
L 94,8 P 51,2 H 102,1

finiture frontali e struttura / structure, and fronts available finishes

MATERICO OPACO / MATT TEXTURED



MT-OC BG
Bianco Gesso
Chalk white

MT-OC MP
Madreperla
Mother of pearl

MT-OC AN
Antracite
Anthracite

MATERICO ESSENZA/ WOOD TEXTURED



MT-RT
Rovere Termocotto
Heat-treated Oak

MT-FO
Frassino Oriente
Eastern Ash

MATERICO NODATO /
KNOTTED TEXTURED



MT-RNC
Nodato chiaro
Light Knotted

MT-RNS
Nodato scuro
Dark knotted

MATERICO / TEXTURED



MT-CC
Cemento chiaro
Light cement

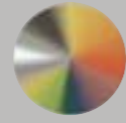
MT-CS
Cemento scuro
Dark cement

MT-CV
Cemento Cava
Cava cement

MT-INT S
Intreccio scuro

MT-INT C
Intreccio chiaro

LACCATI / LACQUERED



colori laccati opachi a campionario (p.127)
choice of matt lacquered colours from our range

finiture fianco e zoccolo / side panel and plinth finish

MATERICO OPACO / MATT TEXTURED



MT-OC BG
Bianco Gesso
Chalk white

MT-OC MP
Madreperla
Mother of pearl

MT-OC AN
Antracite
Anthracite

MATERICO ESSENZA/ WOOD TEXTURED



MT-RT
Rovere Termocotto
Heat-treated Oak

MT-FO
Frassino Oriente
Eastern Ash

MATERICO NODATO /
KNOTTED TEXTURED



MT-RNC
Nodato chiaro
Light Knotted

MT-RNS
Nodato scuro
Dark knotted

ESSENZE / WOOD FINISHES



LGN-RT
Rovere Termocotto
Heat-treated Oak

LGN-FO
Frassino Oriente
Eastern Ash

MATERICO / TEXTURED

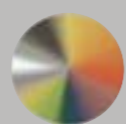


MT-CC
Cemento chiaro
Light cement

MT-CS
Cemento scuro
Dark cement

MT-CV
Cemento Cava
Cava cement

LACCATI / LACQUERED



colori laccati opachi a campionario (p.127)
choice of matt lacquered colours from our range



Comodino 2 cassetti
2-drawer bedside unit
L 43/59 P 41,7 H 41,3

Comò 3 cassetti
3-drawer chest
L 125,3 P 52,5 H 71,5

Settimanale 5 cassetti
5-drawer narrow chest
L 59 P 52,5 H 109,7

finiture disponibili per struttura, frontali e top / structure, fronts and top available finishes

MATERICO OPACO / MATT TEXTURED

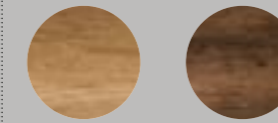


MT-OC BG
Bianco Gesso
Chalk white

MT-OC MP
Madreperla
Mother of pearl

MT-OC AN
Antracite
Anthracite

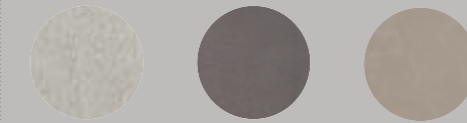
MATERICO NODATO /
KNOTTED TEXTURED



MT-RNC
Nodato chiaro
Light Knotted

MT-RNS
Nodato scuro
Dark knotted

MATERICO / TEXTURED



MT-CC
Cemento chiaro
Light cement

MT-CS
Cemento scuro
Dark cement

MT-CV
Cemento Cava
Cava cement

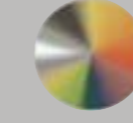
***solo per top** *only for top



MT-INT S*
Intreccio scuro

MT-INT C*
Intreccio chiaro

LACCATI / LACQUERED



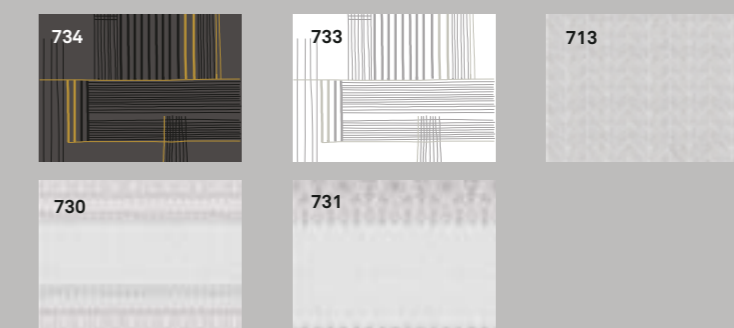
colori laccati opachi a campionario (p.127)
choice of matt lacquered colours from our range

VETRO / GLASS



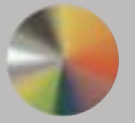
vetro lucido e satinato colorato a campionario (p.128)
choice of gloss and satin coloured glass from our range

finiture Graphic per frontali / Graphic finishes for fronts



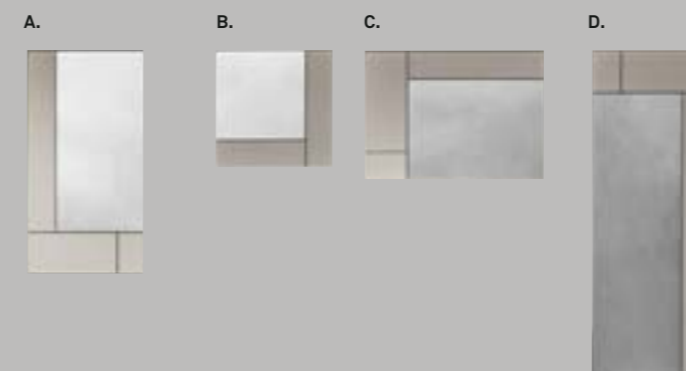
maniglia / handles

LACCATI / LACQUERED



colori laccati opachi a campionario (p.127)
choice of matt lacquered colours from our range

HASHTAG specchiere / mirrors



Specchiera tipo A
Mirror type A
L 65 H 125 SP 3

Specchiera tipo B
Mirror type b
L 65 H 65 SP 3

Specchiera tipo C
Mirror type C
L 100 H 72 SP 3

Specchiera tipo D
Mirror type D
L 65 H 180 SP 3

finiture profilo / trim finishes

LACCATI / LACQUERED



colori laccati opachi a campionario (p.127)
choice of matt lacquered colours from our range

finiture disponibili / available finishes

MATERICO OPACO / MATT TEXTURED



MT-OC BG
Bianco Gesso
Chalk white

MT-OC MP
Madreperla
Mother of pearl

MT-OC AN
Antracite
Anthracite

MATERICO NODATO /
KNOTTED TEXTURED



MT-RNC
Nodato chiaro
Light Knotted

MT-RNS
Nodato scuro
Dark knotted

MATERICO / TEXTURED

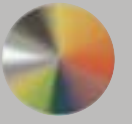


MT-CC
Cemento chiaro
Light cement

MT-CS
Cemento scuro
Dark cement

MT-CV
Cemento Cava
Cava cement

LACCATI / LACQUERED



colori laccati opachi a campionario (p.127)
choice of matt lacquered colours from our range

News armadi

MODULA armadio ante battenti / wardrobe with hingd doors

Larghezza vano /
Compartment width
43,7 - 47,7 - 57,3
90 - 98 - 117,2 cm

Altezza / Height
236 - 255 cm

Profondità / Depth
62 cm

MO1 **MO2** **MO3** **MO4** **MO5**

LACCATI PORO APERTO / OPEN PORE LACQUERED

221 PA Bianco Gesso
Chalk white

222 PA Panna
Cream

224 PA Madreperla
Mother of pearl

227 PA Hot
Hot grey

230 PA Grigio Piacenza
Piacenza grey

250 PA Canapa
Hemp

252 PA Pomice
Pumice

260 PA Antracite
Anthracite

MATERICO OPACO / MATT TEXTURED

MT-OC BG
Bianco Gesso
Chalk white

MT-OC MP
Madreperla
Mother of pearl

MT-OC AN
Antracite
Anthracite

MATERICO ESSENZA/ WOOD TEXTURED

MT-RT
Rovere Termocotto
Heat-treated Oak

MT-FO
Frassino Oriente
Eastern Ash

MATERICO PORO APERTO / OPEN PORE TEXTURED

MT-PA BG
Bianco Gesso
Chalk white

MT-PA MP
Madreperla
Mother of pearl

MATERICO / TEXTURED

MT-CC
Cemento chiaro
Light cement

MT-CV
Cemento Cava
Cava cement

LACCATI / LACQUERED

colori laccati opachi e lucidi a campionario (p.127)
choice of matt lacquered colours from our range

MATERICO NODATO / KNOTTED TEXTURED

MT-RNC
Nodato chiaro
Light Knotted

Disponibile solo per cassettoni
Only available for drawers

finitura maniglia integrata /integrated handle finishes

LACCATI / LACQUERED

colori laccati opachi a campionario (p.127)
choice of matt lacquered colours from our range

DROP armadio ante battenti / wardrobe with hingd doors

Larghezza vano /
Compartment width
43,7 - 47,7 - 57,3
90 - 98 - 117,2 cm

Altezza / Height
236 - 255 cm

Profondità / Depth
62 cm

finiture disponibili / available finishes

LACCATI / LACQUERED



colori laccati opachi e lucidi a campionario (p.127)
choice of matt lacquered colours from our range

LACCATI PORO APERTO / OPEN PORE LACQUERED

221 PA Bianco Gesso
Chalk white

222 PA Panna
Cream

224 PA Madreperla
Mother of pearl

227 PA Hot
Hot grey

230 PA Grigio Piacenza
Piacenza grey

250 PA Canapa
Hemp

252 PA Pomice
Pumice

260 PA Antracite
Anthracite

MATERICO OPACO / MATT TEXTURED

MT-OC BG
Bianco Gesso
Chalk white

MT-OC MP
Madreperla
Mother of pearl

MT-OC AN
Antracite
Anthracite

MATERICO ESSENZA/ WOOD TEXTURED

MT-RT
Rovere Termocotto
Heat-treated Oak

MT-FO
Frassino Oriente
Eastern Ash

MATERICO PORO APERTO / OPEN PORE TEXTURED

MT-PA BG
Bianco Gesso
Chalk white

MT-PA MP
Madreperla
Mother of pearl

MATERICO / TEXTURED

MT-CC
Cemento chiaro
Light cement

MT-CV
Cemento Cava
Cava cement

finitura maniglia integrata /integrated handle finishes

LACCATI / LACQUERED



colori laccati opachi a campionario (p.127)
choice of matt lacquered colours from our range

METROPOLIS armadio ante battenti / wardrobe with hingd doors

Larghezza vano /
Compartment width
43,7 - 47,7 - 57,3
90 - 98 - 117,2 cm

Altezza / Height
236 - 255 cm

Profondità / Depth
63 cm

telaio / frame

Antracite
Anthracite

vetri / glass

320
vetro trasparente
trasparent glass

363
vetro fumè
smoked glass

REMIX armadio ante scorrevoli / wardrobe with sliding doors



Larghezza vano /
Compartment width
117,2 - 136,2 cm

Altezza / Height
236 - 255 cm

Profondità / Depth
67,1 cm

DOUBLE armadio ante scorrevoli / wardrobe with sliding doors



Larghezza vano /
Compartment width
90 - 98 - 117,2
136,2 cm

Altezza / Height
236 - 255 cm

Profondità / Depth
67,1 cm

finiture disponibili / available finishes

LACCATI PORO APERTO / OPEN PORE LACQUERED



221 PA Bianco Gesso / Chalk white
222 PA Panna / Cream
224 PA Madreperla / Mother of pearl
227 PA Hot / Hot grey
230 PA Grigio Piacenza / Piacenza grey
250 PA Canapa / Hemp
252 PA Pomice / Pumice
260 PA Antracite / Anthracite

MATERICO OPACO / MATT TEXTURED



MT-OC BG Bianco Gesso / Chalk white
MT-OC MP Madreperla / Mother of pearl
MT-OC AN Antracite / Anthracite

MATERICO ESSENZA / WOOD TEXTURED



MT-RT Rovere Termocotto / Heat-treated Oak
MT-FO Frassino Oriente / Eastern Ash

MATERICO NODATO /
KNOTTED TEXTURED



MT-RNC
Nodato chiaro /
Light Knotted

MATERICO PORO APERTO /
OPEN PORE TEXTURED



MT-PA BG Bianco Gesso /
Chalk white
MT-PA MP Madreperla /
Mother of pearl

MATERICO / TEXTURED



MT-CC Cemento chiaro /
Light cement
MT-CV Cemento Cava /
Cava cement
MT-INT C Intreccio
chiaro

LACCATI / LACQUERED



**colori laccati opachi
a campionato (p.127)**
choice of matt lacquered
colours from our range

finiture disponibili / available finishes

LACCATI PORO APERTO / OPEN PORE LACQUERED



221 PA Bianco Gesso / Chalk white
222 PA Panna / Cream
224 PA Madreperla / Mother of pearl
227 PA Hot / Hot grey
230 PA Grigio Piacenza / Piacenza grey
250 PA Canapa / Hemp
252 PA Pomice / Pumice
260 PA Antracite / Anthracite

MATERICO OPACO / MATT TEXTURED



MT-OC BG Bianco Gesso /
Chalk white
MT-OC MP Madreperla /
Mother of pearl
MT-OC AN Antracite /
Anthracite

MATERICO ESSENZA / WOOD TEXTURED



MT-RT Rovere Termocotto /
Heat-treated Oak
MT-FO Frassino Oriente /
Eastern Ash

MATERICO NODATO /
KNOTTED TEXTURED



MT-RNC
Nodato chiaro /
Light Knotted

MATERICO PORO APERTO /
OPEN PORE TEXTURED



MT-PA BG Bianco Gesso /
Chalk white
MT-PA MP Madreperla /
Mother of pearl

MATERICO / TEXTURED



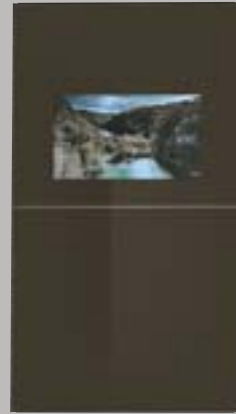
MT-CC Cemento chiaro /
Light cement
MT-CV Cemento Cava /
Cava cement
MT-INT C Intreccio
chiaro

LACCATI / LACQUERED



**colori laccati opachi
a campionato (p.127)**
choice of matt lacquered
colours from our range

VISION armadio ante scorrevoli / wardrobe with sliding doors



Larghezza vano /
Compartment width
117,2 - 136,2 cm

Altezza / Height
255 cm

Profondità / Depth
72 cm

**Armadio Vision con
meccanismo per
predisposizione televisore
(televisore non incluso)**

Vision wardrobe with
mechanism to install a TV
(TV not included)

finiture ante / doors finishes

VETRO / GLASS



Stopsol

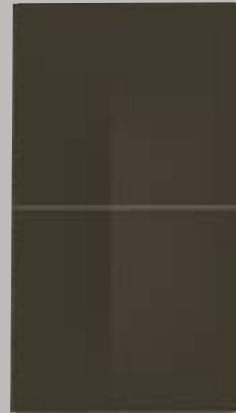
finiture profilo / trim finishes

LACCATI / LACQUERED



**colori laccati opachi
a campionario (p.127)**
choice of matt lacquered colours
from our range

VISION GOLA armadio ante scorrevoli / wardrobe with sliding doors



Larghezza vano /
Compartment width
117,2 - 136,2 cm

Altezza / Height
255 cm

Profondità / Depth
67,1 cm

finiture ante / doors finishes

VETRO / GLASS



Stopsol

finitura maniglia integrata /integrated handle finishes

LACCATI / LACQUERED



**colori laccati opachi
a campionario (p.127)**
choice of matt lacquered colours
from our range

PITTI armadio ante scorrevoli / wardrobe with sliding doors



Larghezza vano /
Compartment width
117,2 - 136,2 cm

Altezza / Height
236 - 255 cm

Profondità / Depth
67,1 cm

finiture struttura e ante / carcass and doors finishes

LACCATI / LACQUERED



**colori laccati opachi
a campionario (p.127)**
choice of matt lacquered
colours from our range

LACCATI PORO APERTO / OPEN PORE LACQUERED



221 PA
Bianco Gesso
Chalk white



222 PA
Panna
Cream



224 PA
Madreperla
Mother of pearl



227 PA
Hot
Hot grey



230 PA
Grigio Piacenza
Piacenza grey



250 PA
Canapa
Hemp



252 PA
Pomice
Pumice



260 PA
Antracite
Anthracite

finiture fascia centrale / centarl band finishes

LACCATI / LACQUERED



**colori laccati opachi
a campionario (p.127)**
choice of matt lacquered
colours from our range

LACCATI PORO APERTO / OPEN PORE LACQUERED



221 PA
Bianco Gesso
Chalk white



222 PA
Panna
Cream



224 PA
Madreperla
Mother of pearl



227 PA
Hot
Hot grey



230 PA
Grigio Piacenza
Piacenza grey



250 PA
Canapa
Hemp



252 PA
Pomice
Pumice



260 PA
Antracite
Anthracite

finiture inserto maniglia / handle insert finishes

MATERICO ESSENZA / WOOD TEXTURED



MT-RT
Rovere Termocotto
Heat-treated Oak



MT-FO
Frassino Oriente
Eastern Ash

MATERICO NODATO / KNOTTED TEXTURED



MT-RNC
Nodato chiaro
Light Knotted

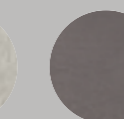


MT-RNS
Nodato scuro
Dark knotted

MATERICO / TEXTURED



MT-CC
Cemento chiaro
Light cement



MT-CS
Cemento scuro
Dark cement



MT-CV
Cemento Cava
Cava cement



MT-INT S
Intreccio
scuro



MT-INT C
Intreccio
chiaro

LACCATI / LACQUERED



**colori laccati opachi
a campionario (p.127)**
choice of matt lacquered
colours from our range

LACCATI PORO APERTO / OPEN PORE LACQUERED



221 PA
Bianco Gesso
Chalk white



222 PA
Panna
Cream



224 PA
Madreperla
Mother of pearl



227 PA
Hot
Hot grey



230 PA
Grigio Piacenza
Piacenza grey



250 PA
Canapa
Hemp



252 PA
Pomice
Pumice



260 PA
Antracite
Anthracite

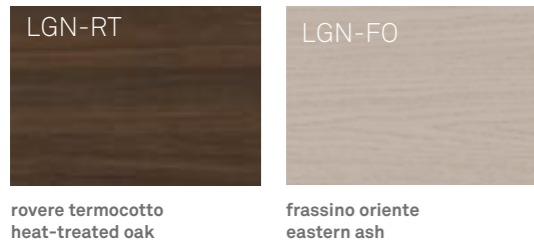
finiture profilo / trims finishes



LACCATI / LACQUERED

colori laccati opachi a campionario (p.127)
choice of matt lacquered colours from our range

Essenze - Wood finishes



Materico essenza - Textured Wood



Materico - Textured



solo dove previsto /
only where expected



Materico opaco - Matt textured



Materico poro aperto - Open pore textured



Legno laccato poro aperto - Open pore lacquer wood



Laccati opachi e lucidi - Matt and gloss lacquers

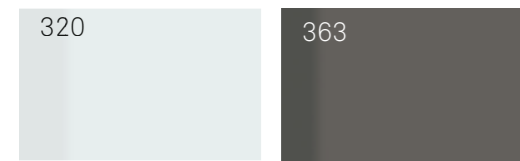


Le finiture e i colori sono indicativi
e possono subire variazioni dovute
alla tecnica di stampa.
Finishes and colours are given as
a rough guide only and are repro-
duced as accurately as the print
process allows.

Hashtag finiture Graphic per frontali / Graphic finishes for fronts



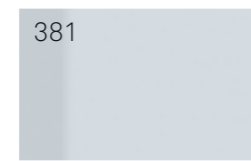
Metropolis



vetro trasparente
transparent glass

vetro fumè
fumè glass

Specchi



specchio argentato
silver mirror

Vision



Vetri colorato lucido e opaco / Gloss and matt lacquered glass



bianco gesso
chalk white

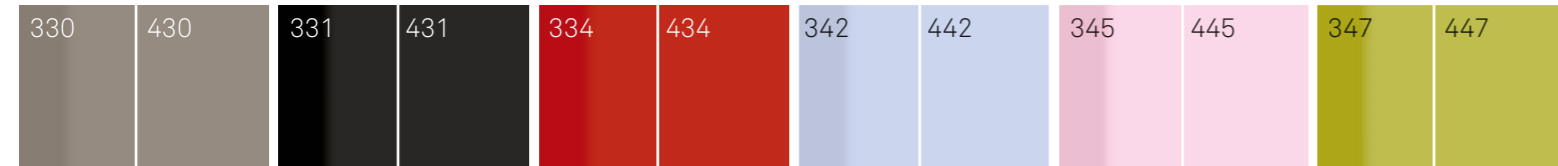
panna
cream

avorio
ivory

madreperla
mother of pearl

hot
hot grey

smoke
smoke



grigio piacenza
piacenza grey

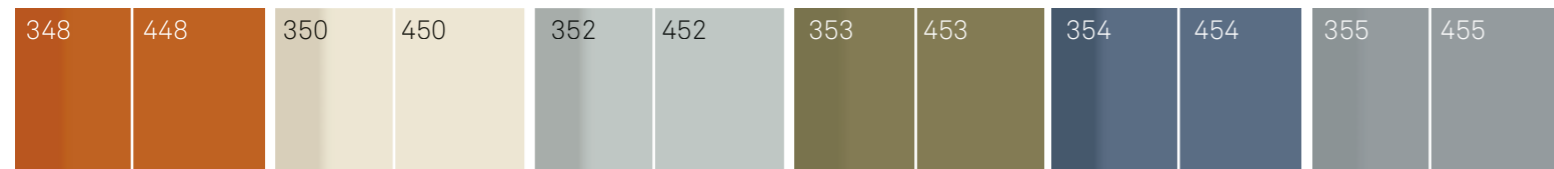
nero fumo
smoke black

rosso
red

celest
light blue

pink
pink

oliva
olive



arancio
orange

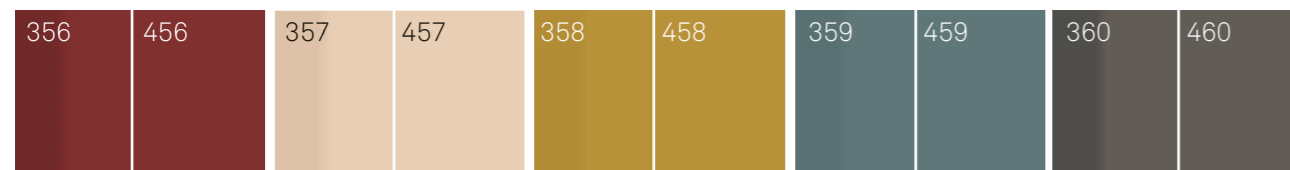
canapa
hemp

pomice
pumice

verde muschio
moss green

blu avio
air force blue

carta da zucchero
blue grey



bordeaux
burgundy

pesca
peach

zafferano
saffron

salvia
sage

antracite
anthracite

pagine di sintesi

testi in spagnolo,
francese e tedesco

Páginas de síntesis

Descriptifs

Seitenübersicht

Textos en español, francés y alemán
Textes en espagnol, français et allemand
Texte in spanisch, französisch und deutsch

[Páginas de síntesis](#)
[Descriptifs](#)
[Seitenübersicht](#)

Textos en español,
francés y alemán
Textes en espagnol,
français et allemand
Texte in spanisch,
französisch und deutsch

pag.6 - 7



Bahía cama Madera roble termotrataado y ecopiel cat. B econobuk 12.
Capitol contenedor Mesitas de noche y cómoda madera roble termotrataado y lacado mate hot 127.
Bolle espejo
Vision / Vision gola armario
composición 550 - A 280 P 72 H 255 cm
Dos puertas correderas stopsol con perfiles metal hot 127.
Estructura lacada mate hot 127.

Bahía lit Bois de chêne thermo-traité et écocuir cat.B éconobuk 12. **Capitol meubles** Chevets et commode en bois de chêne thermo-traité et laqués hot 127 mat.
Vision / Vision gola armoire
composition 550 - L 280 P 72 H 255 cm
Deux portes coulissantes en verre stopsol avec profils en métal hot 127. Structure laquée hot 127 mat. **Bolle miroir**

Bahía Bett Holz Thermoeiche und Lederimitat Kat. B Econabuk 12.
Capitol Beimöbel Nachttisch und Kommode Holz Thermoeiche und matt lackiert Hot 127.
Vision / Vision gola Schrank
Zusammenstellung 550 - B 280 T 72 H 255 cm
Zwei Schiebetüren aus Stopsol mit Profilen aus Metall Hot 127. Struktur matt lackiert Hot 127. **Bolle Spiegel**

pag.14 - 15



Sogno cama Madera roble termotrataado y cat. B econobuk 12.
Capitol ontenedor Cómoda y mesitas de noche lacado mate smoke 128 y texturizado mate madreperla.
Metropolis armario
composición 320 - A 304 P 63 H 255 cm
Seis puertas batientes cristal fumé, metal antracita 160.
Estructura texturizado mate madreperla.

Sogno lit Bois de chêne thermo-traité et cat.B éconobuk 12.
Capitol meubles Commode et chevets laqués smoke 128 mat et texturé nacre mat.
Metropolis armoire
composition 320 - L 304 P 63 H 255 cm
Six portes battantes en verre fumé et métal anthracite 160. Structure en texturé nacre mat.

Sogno Bett Holz Thermoeiche und Kat. B Econabuk 12.
Capitol Beimöbel Kommode und Nachttisch matt lackiert Smoke 128 und Rau matt Perlmutter.
Metropolis Schrank Zusammenstellung 320 B 304 T 63 H 255 cm
Sechs Drehtüren aus Rauchglas, Metall Anthrazit 160.
Struktur Rau matt Perlmutter.

pag.32 - 33



Nikki N03 cama Texturizado mate antracita. Cojines cat. B ecopiel vintage 1008, cat. B ecopiel vintage 107,1/one easy 20. **Replay contenedor** Mesita de noche texturizado cemento cantera y encimera texturizado mate antracita. Mesita de noche suspendida texturizado mate antracita y encimera texturizado cemento cantera. Cómoda texturizado mate madreperla, texturizado cemento cantera, texturizado mate antracita y encimera texturizado mate antracita. **Ring estante** Texturizado mate antracita y metal madreperla 124.

Nikki N03 lit Texturé anthracite mat. Coussins cat.B écocuir vintage 1008, cat.B écocuir vintage 107, 1/one Easy 20. **Replay meubles** Chevet en texturé ciment carrière et plateau en texturé anthracite mat. Chevet suspendu en texturé anthracite mat et plateau en texturé ciment carrière. Commode en texturé nacre mat, texturé ciment carrière, texturé anthracite mat et plateau en texturé anthracite mat. **Ring étagère** Texturé anthracite mat et métal nacre 124.

Nikki N03 Bett Rau matt lackiert Anthrazit Kissen Kat. B Lederimitat Vintage 1008, Kat. B Lederimitat Vintage 107, 1/One Easy 20. **Replay Beimöbel** Nachttisch Rau Zement Cava und Abdeckplatte Rau matt Anthrazit. Wandhängender Nachttisch Rau matt Anthrazit und Abdeckplatte Rau Zement Cava. Kommode Rau matt Perlmutter, Rau Zement Cava, Rau matt Anthrazit und Abdeckplatte Rau matt Anthrazit. **Ring Bord** Rau matt Anthrazit und Metall Perlmutter 124.

pag.36 - 37



Modula armario
composición 600 - A 373 P 62 H 255 cm
Ocho puertas batientes en texturizado poro abierto madreperla, metal antracita 160.
Gavetas en texturizado con nudos claro.
Nikki N02 cama Texturizado con nudos claro, y cojines cat. C lino froissé 100.
Capitol contenedor Cómoda y mesitas de noche texturizado con nudos claro y texturizado mate madreperla.

Modula armoire
composition 600 - L 373 P 62 H 255 cm
Huit portes battantes enpores ouverts nacre, métal anthracite 160. Grands tiroirs en texturé chêne à nœuds clair.
Nikki N02 lit Texturé chêne à nœuds clair et coussins cat. C lino froissé 100.
Capitol meubles Commode et chevet en texturé chêne à nœuds clair et texturé nacre mat.

Modula Schrank
Zusammenstellung 600 - B 373 T. 62 H 255 cm
Acht Drehtüren in offenporig Perlmutter, Metall Anthrazit 160. Schubkästen in Rau astig hell.
Nikki N02 Bett Rau astig hell und Kissen Kat. C Leinen Froissé 100.
Capitol Beimöbel Kommode und Nachttische Rau astig hell und Rau matt Perlmutter.

pag.42 -43



Nikki N04 cama Texturizado con nudos claro. Cojines cat. C lino froissé 100, cat. B ecopiel vintage 102, cat. C lino froissé 05 y cat. B econobuk 02.
Athena contenedor Mesitas de noche y sinfonier texturizado mate madreperla, aplicación texturizado con nudos claro.

Nikki N04 lit Texturé chêne à nœuds clair. Coussins cat.C lin froissé 100, cat.B écocuir vintage 102, cat.C lin froissé 05 et cat.B éconobuk 02.
Athena meubles Chevets et semainier en texturé nacre mat, poignée encastrée en texturé chêne à nœuds clair.

Nikki N04 Bett Rau astig hell. Kissen Kat. C Leinen Froissé 100, Kat. B Lederimitat Vintage 102, Kat. C Leinen Froissé 05 und Kat. B Econabuk 02.
Athena Beimöbel Nachttische und Hochkommode Rau matt Perlmutter, Einsatz Rau astig hell.

pag.20 - 21



Prado cama Madera roble termotrataado. **Dolcevida contenedor** Cómoda y mesitas de noche madera roble termotrataado. **Bloommesita table** Madera roble termotrataado y cristal transparente 320.
Krizia armario **composición 541- A 280 P 67 H 255 cm**
Dos puertas correderas lacado mate azul niño 155 y aplicación lacado mate antracita 160.

Prado lit Bois de chêne thermo-traité. **Dolcevida meuble** Commode et chevets en bois de chêne thermo-traité **Bloom table de chevet** Bois de chêne thermo-traité et verre transparent 320. **Krizia armoire** **composition 541 L 280 P 67 H 255 cm** Deux portes coulissantes laquées bleu pastel 155 mat et poignée.

Prado Bett Holz Thermoeiche. **Dolcevida Beimöbel** Kommode und Nachttische Holz Thermoeiche. **Bloom Beistelltisch** Holz Thermoeiche und transparentes Glas 320.
Krizia Schrank **Zusammenstellung 541 B 280 T 67 H 255 cm**
Zwei Schiebetüren matt lackiert Pastellblau 155 und Einsatz matt lackiert Anthrazit 160.

pag.24 - 25



Prado cama Madera lacada poro abierto madreperla 224.
Bolle espejo
Pass contenedor Mesitas de noche lacado mate smoke 128. Cómoda lacadomatemadreperla 124.

Prado lit Bois laqué à pores ouverts nacre 224.
Bolle miroir
Pass meubles Chevets laqués smoke 128 mat. Commode laquée nacre 124 mat.

Prado Bett Holz offenporig lackiert Perlmutter 224.
Bolle Spiegel
Pass Beimöbel Nachttische matt lackiert Smoke 128. Kommode matt lackiert Perlmutter 124.

pag.28 - 29



Prado cama con contenedor Madera roble termotrataado y cat. B ecopiel vintage 102.
Bogart contenedor Lacado poro abierto madreperla 224.

Prado lit avec coffre Bois de chêne thermo-traité et cat. B écocuir vintage 102.
Bogart meubles Laqué à pores ouverts nacre 224.

Prado Bett mit Bettkasten Holz Thermoeiche und Kat. B Lederimitat Vintage 102.
Bogart Beimöbel Offenporig lackiert Perlmutter 224.

pag.46 - 47



Remix + Double armario
composición 551- A 280 P 67 H 255 cm
Puertas correderas texturizado cemento cantera y texturizado con nudos claro.
Zeno cama Cat. B ecopiel vintage 1009 y costura 3426.
Hashtag contenedor Mesitas de noche texturizado con nudos claro y metal blanco yeso 121.
Encimera cristal satinado blanco yeso 421
Cómoda texturizado cemento cantera y metal a juego. Encimera texturizado con nudos claro.

Remix + Double armoire
Composition 551 - L 280 P 67 H 255 cm
Portes coulissantes en texturé ciment carrière et texturé chêne à nœuds clair.
Zeno lit Cat. B écocuir vintage 1009 et surpiqûre 3426.
Hashtag meubles Chevets en texturé chêne à nœuds clair et métal blanc craie 121. Plateau en verre satiné blanc craie 421. Commode en texturé ciment carrière et métal dans la même teinte. Plateau en texturé chêne à nœuds clair.

Remix + Double Schrank
Zusammenstellung 551- B 280 T 67 H 255 cm
Schiebetüren Rau Zement Cava und Rau astig hell.
Zeno Bett Kat. B Lederimitat Vintage 1009 und Nahtfaden 3426.
Hashtag Beimöbel Nachttische Rau astig hell und Metall Gipsweiß 121. Abdeckplatte satiniertes Glas Gipsweiß 421
Kommode Rau Zement Cava und Metall in gleicher Farbe. Abdeckplatte Rau astig hell.

pag.52 - 53



Joker cama Texturizado con nudos claro y texturizado cemento claro.
Hashtag contenedor Mesitas de noche texturizado cemento claro, encimera texturizado con nudos claro y perfil metal madreperla 124. Cómoda lacado mate smoke 128, perfil metal madreperla 124.

Joker lit Texturé chêne à nœuds clair et texturé ciment clair.
Hashtag meubles Chevets en texturé ciment clair, plateau en texturé chêne à nœuds clair et profil en métal nacre 124. Commode laquée smoke 128 mat, profil en métal nacre 124.

Joker Bett Rau Eiche astig hell und Rau Zement hell.
Hashtag Beimöbel Nachttische Rau Zement hell, Abdeckplatte Rau astig hell und Profil aus Metall Perlmutter 124.
Kommode matt lackiert Smoke 128, Profil aus Metall matt lackiert Perlmutter 124.

pag.56 - 57



Hashtag contenedor Mesita de noche texturizado mate blanco yeso, decoración 733 y perfiles metal blanco yeso 121. Cómoda texturizado cemento claro y perfiles metal madreperla 124.
Skyline black and white cama Aro de cama de borde alto cat. 1-One Atom 01 y pata Victor metal blanco yeso 121.

Hashtag meubles Chevet en texturé blanc craie mat, décor graphique 733 et profils en métal blanc craie 121. Commode en texturé ciment clair et profils en métal nacre 124.
Skyline black and white lit Cadre de lit Vaschetta cat. 1-One Atom 01 et pieds Victor en métal blanc craie 121.

Hashtag Beimöbel Nachttisch Rau matt Gipsweiß, Grafikmuster 713 und Profile aus Metall Gipsweiß 121.
Kommode Rau Zement hell und Profile aus Metall Perlmutter 124.
Skyline black and white Bett Betrahmen Vaschetta Kat. 1-One Atom 01 und Fuß Victor Metall Gipsweiß 121.



Fusion cama Texturizado con nudos oscuro y cat. B ecopiel vintage 1009.
Pitti armario composición 543 - A 280 P 67 H 255 cm
 Dos puertas correderas, estructura y puertas lacado mate hot 127, aplicación tirador texturizado con nudos oscuro y perfil metal hot 127.

Fusion lit Texturé chène à nœuds foncé et cat. B écocuir vintage 1009.
Pitti armoire composition 543 -L 280 P 67 H 255 cm
 Deux portes coulissantes, structure et portes laquées hot 127 mat, poignée encastrée en texturé chène à nœuds foncé et profil en métal hot 127.

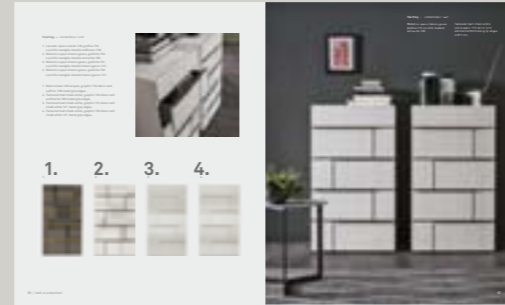
Fusion Bett Rau astig dunkel und Kat. B Lederimitat Vintage 1009.
Pitti Schrank Zusammenstellung 543 - B 280 T 67 H 255 cm
 Zwei Schiebetüren, Struktur und Türen matt lackiert Hot 127, Griffersatz Rau astig dunkel und Profil aus Metall Hot 127.



Fusion cama
 Texturizado poro abierto madreperla, cat. 1-One Easy 20.

Fusion lit
 Texturé nacre à pores ouverts, cat. 1-One Easy 20.

Fusion Bett
 Rau offenporig lackiert Perlmutter, Kat. 1-One Easy 20.



p.68 Hashtag contenedor 1.Lacado mate smoke 128, decoración 734 y perfil tirador metal azafrán 158
 2.Texturizado mate blanco yeso, decoraciones 733 y perfil tirador metal antracita 160
 3. Texturizado mate blanco yeso, decoraciones 731 y perfil tirador metal blanco yeso 121.
 4. Texturizado mate blanco yeso, decoraciones 730 y perfil tirador metal blanco yeso 121.
p.69 Hashtag contenedor Texturizado mate blanco yeso, decoración 713 y perfiles metal antracita 160.

p.68 Hashtag meubles 1.Laqué smoke 128 mat, décor graphique 734 et profil poignée en métal safran 158.
 2.Texturé blanc craie mat, décor graphique 733 et profil poignée en métal anthracite 160.
 3.Texturé blanc craie mat, décor graphique 731 et profil poignée en métal blanc craie 121.
 4.Texturé blanc craie mat, décor graphique 730 et profil poignée en métal blanc craie 121.
p.69 Hashtag meublesTexturé blanc craie mat, décor graphique 713 et profils en métal anthracite 160.

P.68 Hashtag Beimöbel 1.Matt lackiert Smoke 128, Grafikmuster 734 und Griffprofil aus Metall Safran 158.
 2. Rau matt Gipsweiß, Grafikmuster 733 und Griffprofil aus Metall Anthrazit 160
 3.Rau matt Gipsweiß, Grafikmuster 731 und Griffprofil aus Metall Gipsweiß 121.
 4.Rau matt Gipsweiß, Grafikmuster 730 und Griffprofil aus Metall Gipsweiß 121.
P.69 Hashtag Beimöbel Rau matt Gipsweiß, Grafikmuster 713 und Griffprofil aus Metall Anthrazit 160.



Metropolis gola armario
Composición 321
A373 P 63 H 255 cm
 Ocho puertas batientes cristal fumé 363, texturizado roble termotratado y metal antracita 160. Estructura texturizado roble termotratado.

Metropolis gola armoire
Composition 321
L 373 P 63 H 255 cm
 Huit portes battantes en verre fumé 363, texturé chène thermo-traité et métal anthracite 160. Structure en texturé chène thermo-traité.

Metropolis Gola Schrank
Zusammenstellung 321
B 373 T 63 H 255 cm
 Acht Drehtüren aus Rauchglas 363, Rau Thermoeiche und Metall Anthrazit 160. Struktur Rau Thermoeiche.



Modula armario
Composición 600
A 373 P 62 H 255 cm
 Ocho puertas batientes en texturizado poro abierto madreperla, metal antracita 160. Gavetas en texturizado con nudos claro. Tirador metal lacado antracita 160.

Modula armoire
Composition 600
L 373 P 62 H 255 cm
 Huit portes battantes en pores ouverts nacre, métal anthracite 160. Grands tiroirs en texturé chène à nœuds clair. Poignée en métal laqué anthracite 160.

Modula Schrank
Zusammenstellung 600
B 373 T 62 H 255 cm
 Acht Drehtüren in offenporig Perlmutter, Metall Anthrazit 160. Schubkästen in Rau astig hell. . Griff aus Metall lackiert Anthrazit 160.



Drop armario
Composición 322
A/W 304 P/D 62 H 255 cm
 Seis puertas batientes texturizado mate madreperla. Tirador metal smoke 128. Estructura texturizado mate madreperla.

Drop armoire
Composition 322
L304 P 62 H 255 cm
 Six portes battantes en texturé nacre mat. Poignée en métal smoke 128. Structure en texturé nacre mat.

Drop Schrank
Zusammenstellung 322
B 304 T 62 H 255 cm
 Sechs Drehtüren Rau matt Perlmutter. Griff aus Metall Smoke 128. Struktur Rau matt Perlmutter.



Piuma cama Cat. C lino froissé 123, texturizado con nudos oscuro y pata Victor metal antracita 160.
Hashtag contenedor Cómoda y mesitas de noche texturizado con nudos oscuro, encimera cristal satinado salvia 459 y perfil metal salvia 159.

Piuma lit Cat. C lin froissé 123, texturé chène à nœuds foncé et pieds Victor en métal anthracite 160.
Hashtag meubles Commode et chevets en texturé chène à nœuds foncé, plateau en verre satiné sauge 459 et profil en métal sauge 159.

Piuma Bett Kat. C Leinen Froissé 123, Rau astig dunkel und Fuß Victor Metall Anthrazit 160.
Hashtag Beimöbel Kommode und Nachttische Rau astig dunkel, Abdeckplatte satiniertes Glas Salbei 459 und Profil aus Metall Salbei 159.



Hashtag espejos Texturizado mate madreperla, perfil lacado mate antracita 160 y espejo plateado 381.
Atlante contenedor Texturizado trenzado oscuro y metal antracita 160.

Hashtag miroir Texturé nacre mat, profil laqué anthracite 160 mat et glace argentée 381.
Atlante meubles Texturé Intreccio foncé et métal anthracite 160.

Hashtag Spiegel Rau matt Perlmutter, Profil matt lackiert Anthrazit 160 und Spiegel in Silberoptik 381.
Atlante Beimöbel Rau Geflecht dunkel und Metall Anthrazit 160.



Metropolis armario
Composición 320
A/W 304 P/D 63 H 255 cm
 Seis puertas batientes cristal fumé 363, metal antracita 160. Estructura texturizado mate madreperla.

Metropolis armoire
Composition 320
L 304 P 63 H 255 cm
 Six portes battantes en verre fumé 363, métal anthracite 160. Structure en texturé nacre mat.

Metropolis Schrank
Zusammenstellung 320
B 304 T 63 H 255 cm
 Sechs Drehtüren aus Rauchglas 363, Metall Anthrazit 160. Struktur Rau matt Perlmutter.



Liscia armario
Composición 323
A 404,5 P 62 H 255 cm
 Ocho puertas texturizado cemento cantera con tirador Segno a juego. Estructura en texturizado cemento cantera.

Liscia armoire
Composition 323
L 404,5 P 62 H 255 cm
 Huit portes en texturé ciment carrière avec poignée Segno dans la même teinte. Structure en texturé ciment carrière.

Liscia Schrank
Zusammenstellung 323
B 404,5 T 62 H 255 cm
 Acht Türen Rau Zement Cava mit Griff Segno in gleicher Farbe. Struktur in Rau Zement Cava.



Vision / vision gola armario
Composición 550
A 280 P 72 H 255 cm
 Dos puertas correderas cristal stopsol con perfiles metal hot 127. Estructura lacado mate hot 127.

Vision / vision gola armoire
Composition 550
L 280 P 72 H 255 cm
 Deux portes coulissantes en verre stopsol avec profils en métal hot 127. Structure laquée hot 127 mat.

Vision / Vision Gola Schrank
Zusammenstellung 550
B 280 T 72 H 255 cm
 Zwei Schiebetüren aus Stopsol-Glas mit Profilen aus Metall Hot 127. Struktur matt lackiert Hot 127.



Vision / 2 sectores armario
Composición 542
A 280 P 72 H 255 cm
 Dos puertas correderas texturizado mate madreperla, stopsol con perfiles metal mate madreperla 124. Estructura texturizado mate madreperla.

Vision / 2 settori armoire
Composition 542
L 280 P 72 H 255 cm
 Deux portes coulissantes en texturé nacre mat, verre stopsol avec profils en métal nacre 124 mat. Structure en texturé nacre mat.

Vision / 2 Felder Schrank
Zusammenstellung 542
B 280 T 72 H 255 cm
 Zwei Schiebetüren Rau matt Perlmutter, Stopsol mit Profilen aus Metall matt Perlmutter 124. Struktur Rau matt Perlmutter.

Páginas de síntesis

Descriptifs

Seitenübersicht

Textos en español,

francés y alemán

Textes en espagnol,

français et allemand

Texte in spanish,

français und deutsch

pag. 98 -99



Krizia armario

Composición 541

A 280 P 67 H 255 cm

Dos puertas correderas estructura, puertas lacado mate azul niño 155 y aplicación lacado mate antracita 160.

Krizia armoire

Composition 541

L 280 P 67 H 255 cm

Deux portes coulissantes, structure et portes laquées bleu pastel 155 mat, poignée encastrée laquée anthracite 160 mat.

Krizia Schrank

Zusammenstellung 541

B 280 T 67 H 255 cm

Zwei Schiebetüren, Struktur und Türen matt lackiert Pastellblau 155 und Einsatz matt lackiert Anthrazit 160.

pag. 102 - 103



Pitti armario

Composición 540

A 361,6 P 67 H 255 cm

Estructura y puertas en texturizado mate madreperla, aplicación tirador texturizado trenzado oscuro y perfil metal antracita 160.

Pitti armoire

Composition 540

L 361,6 P 67 H 255 cm

Structure et portes en texturé nacre mat, poignée encastrée en texturé Intreccio foncé et profils en métal anthracite 160.

Pitti Schrank

Zusammenstellung 540

B 361,6 T 67 H. 255 cm

Struktur und Türen in Rau matt Perlmutter, Griffeneinsatz Rau Geflecht dunkel und Profil aus Metall Anthrazit 160.

pag. 110



p. 110

Conjuntos de raso

1. Conjunto de funda nórdica de raso en color liso. Conjunto compuesto por funda de edredón, sábana bajera sin esquinas y fundas de raso.

2. Conjunto cubrecama de raso acolchado en color liso. Conjunto compuesto por sábana encimera, sábana bajera sin esquinas y fundas de raso y en acolchado.

3. Calientapiés de raso acolchado a juego opcional.

4. Raso, colores disponibles: Ostrica - Baguio- Grisaglia Terrazza

p. 111

Conjuntos de raso estampado

1. Conjunto de funda nórdica de raso estampado. Conjunto compuesto por sábana bajera sin esquinas, fundas y funda de edredón de raso estampado.

2. Conjunto cubrecama de raso estampado con acolchado baguette. Conjunto compuesto por sábana encimera, sábana bajera sin esquinas y fundas de raso y acolchado baguette con motivo gráfico estampado

3. Calientapiés de raso acolchado baguette opcional

4. Raso estampado, motivos gráficos disponibles: 800-801-833-837

p. 110

Parures de lit en Satin

1. Parure housse de couette en satin teinte unie. Composée par housse de couette, drap de dessous sans contour élastique et taies d'oreiller en satin.

2. Parure de draps et courtpointe en satin teinte unie. Composée par drap de dessus, drap de dessous sans contour élastique et taies d'oreiller en satin et courtpointe.

3. Couvre-pied optionnel en satin matelassé teinte unie.

4. Satin - coloris disponibles: Ostrica - Baguio- Grisaglia Terrazza

p. 111

Parures de lit en Satin Imprimé

1. Parure housse de couette en satin imprimé. Composée par drap de dessous sans contour élastique, taies d'oreiller et housse de couette en satin imprimé.

2. Parure de draps en satin imprimé et courtpointe matelassée type « baguette ». Composée par drap de dessus, drap de dessous sans contour élastique et taies d'oreiller en satin et courtpointe matelassée type « baguette » décor fantaisie.

3. Couvre-pied optionnel en satin matelassé type « baguette ».

4. Satin imprimé - décor disponibles: 800-801-833-837

p. 110

Bettwäschegarnituren aus Satin

1. Bettwäschegarnitur mit Deckenbezug aus einfarbigem Satin. Die Garnitur besteht aus einem Deckenbezug, einem unteren Bettlaken ohne Ecken und zwei Kissenbezügen aus Satin.

2. Bettwäschegarnitur mit Tagesdecke aus gestepptem einfarbigem Satin. Die Garnitur besteht aus einem oberen Bettlaken, einem unteren Bettlaken ohne Ecken, zwei Kissenbezügen aus Satin und einer Steppdecke.

3. Als Extra Fußwärmer aus gestepptem einfarbigem Satin.

4. Satin, lieferbare Farben: Ostrica - Baguio- Grisaglia - Terrazza

p. 111

Bettwäschegarnituren aus bedrucktem Satin

1. Bettwäschegarnitur mit Deckenbezug aus bedrucktem Satin. Die Garnitur besteht aus einem unteren Bettlaken ohne Ecken, zwei Kissenbezügen und einem Deckenbezug aus bedrucktem Satin.

2. Bettwäschegarnitur mit Tagesdecke aus bedrucktem Satin mit Baguette-Steppung. Die Garnitur besteht aus einem oberen Bettlaken, einem unteren Bettlaken ohne Ecken, zwei Kissenbezügen aus Satin und einer Tagesdecke mit Baguette-Steppung und gedrucktem Muster.

3. Als Extra Fußwärmer aus einfarbigem Satin mit Baguette-Steppung.

4. Bedruckter Satin, lieferbare Muster: 800-801-833-837

pag. 104 - 105



Pitti armario

Composición 543

A 280 P 67 H 255 cm

Dos puertas correderas, estructura y puertas lacado hot 127, aplicación tirador texturizado con nudos oscuro y perfil metal mate hot 127.

Pitti armoire

Composition 543

L 280 P 67 H 255 cm

Deux portes coulissantes, structure et portes laquées hot 127 mat, poignée encastrée en texturé chêne à nœuds foncé et profils en métal hot 127 mat.

Pitti Schrank

Zusammenstellung 543

B 280 T 67 H 255 cm

Zwei Schiebetüren, Struktur und Türen lackiert Hot 127, Griffeneinsatz Rau astig dunkel und Profil aus Metall matt Hot 127.

pag. 107



Remix + Double armario

Composición 551

A 280 P 67 H 255 cm

Puertas correderas y estructura texturizado cemento cantera y texturizado con nudos claro.

Remix + Double armoire

Composition 551

L 280 P 67 H 255 cm

Portes coulissantes et structure en texturé ciment carrière et texturé chêne à nœuds clair.

Remix + Double Schrank

Zusammenstellung 551

B 280 - T 67 H 255 cm

Schiebetüren und Struktur Rau Zement Cava und Rau astig hell.

pag. 108 - 109



Double armario

Composición 552

A 280 P 67 H 255 cm

Dos puertas correderas texturizado con nudos claro y texturizado mate blanco yeso. Estructura en texturizado mate blanco yeso.

Double armoire

Composition 552

L 280 P 67 H 255 cm

Deux portes coulissantes en texturé chêne à nœuds clair et texturé blanc craie mat. Structure en texturé blanc craie mat.

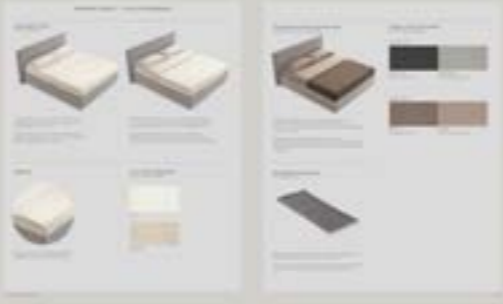
Double Schrank

Zusammenstellung 552

B 280 T 67 H 255 cm

Zwei Schiebetüren Rau astig hell und Rau matt Gipsweiß. Struktur in Rau matt Gipsweiß.

pag. 112



p. 112

Conjuntos de lino

1. Conjunto de funda nórdica de lino en color liso. Conjunto compuesto por funda de edredón, sábana bajera sin esquinas y fundas de lino.

2. Conjunto cubrecama de lino con acolchado baguette. Conjunto compuesto por sábana encimera, sábana bajera sin esquinas y fundas de lino, acolchado baguette de lino.

3. Calientapiés de lino acolchado baguette.

4. Lino, colores disponibles: Avorio y naturale

p.113

1. Conjunto de funda nórdica de algodón reversible. Conjunto compuesto por funda de edredón reversible (lado superior oscuro y lado inferior claro), sábana bajera sin esquinas y fundas de algodón.

2. Calientapiés acolchado Calientapiés disponible en Raso, Lino y Raso estampado y en los tejidos del muestrario Cat 1/ ONE, A, B, C y D.

3. Algodón, colores disponibles Gris oscuro (encima)

Gris claro (debajo) Marrón (encima) Castor (debajo)

p. 112

Parures de lit en Lin

1. Parure housse de couette en lin teinte unie. Composée par housse de couette, drap de dessous sans contour élastique et taies d'oreiller en lin.

2. Parure de draps en lin et courtpointe matelassée type « baguette ». Composée par drap de dessus, drap de dessous sans contour élastique et taies d'oreiller en lin, courtpointe matelassée type « baguette » en lin.

3. Couvre-pied en lin matelassé type « baguette ».

4. Lin - coloris disponibles: Avorio et naturale

p. 113

Parures de lit en Coton double face

1. Parure housse de couette en coton double face. Composée par housse de couette double face (dessus foncé et dessous clair), drap de dessous sans contour élastique et taies d'oreiller en coton.

2. Couvre-pied matelassé Couvre-pied disponible en Satin, Lin et Satin imprimé et dans les tissus du nuancier Cat 1/ ONE, A, B, C et D.

3. Coton - coloris disponibles Gris foncé (dessus)

Gris clair (dessous) Marron (dessus) Castor (dessous)

p. 112

Bettwäschegarnituren aus Leinen

1. Bettwäschegarnitur mit Deckenbezug aus einfarbigem Leinen. Die Garnitur besteht aus einem Deckenbezug, einem unteren Bettlaken ohne Ecken und zwei Kissenbezügen aus Leinen.

2. Bettwäschegarnitur mit Tagesdecke aus Leinen mit Baguette-Steppung. Die Garnitur besteht aus einem oberen Bettlaken, einem unteren Bettlaken ohne Ecken, zwei Kissenbezügen aus Leinen und einer Steppdecke aus Leinen mit Baguette-Steppung.

3. Fußwärmer aus Leinen mit Baguette-Steppung.

4. Leinen, lieferbare Farben: Avorio und naturale

p. 113

1. Bettwäschegarnitur mit Deckenbezug aus Doubleface-Baumwolle. Die Garnitur besteht aus einem Doubleface-Deckenbezug (dunkle Seite oben, helle Seite unten), einem unteren Bettlaken ohne Ecken und zwei Kissenbezüge aus Baumwolle.

2. Gesteppter Fußwärmer Der Fußwärmer ist in Satin, Leinen, bedrucktem Satin und in den Stoffvarianten laut Muster Kat 1/ ONE, A, B, C und D erhältlich.

3. Baumwolle, lieferbare Farben: Dunkelgrau (oben), Hellgrau (unten) Braun (oben) und Biberbraun (unten)

E' vietata ogni riproduzione totale e parziale in Italia e all'estero.

Reproduction of all or any part of this publication in Italy or in any other country is prohibited.



product design
ROSSI & CO.
art direction and styling
ROSSI & CO.
graphic design
ROSSI & CO.
photography
STUDIO INDOOR
color separation
Z13
print
OGM





TOMASELLA

tomasella.it